

3K3y Slim Install (CECH20xx & CECH21xx)

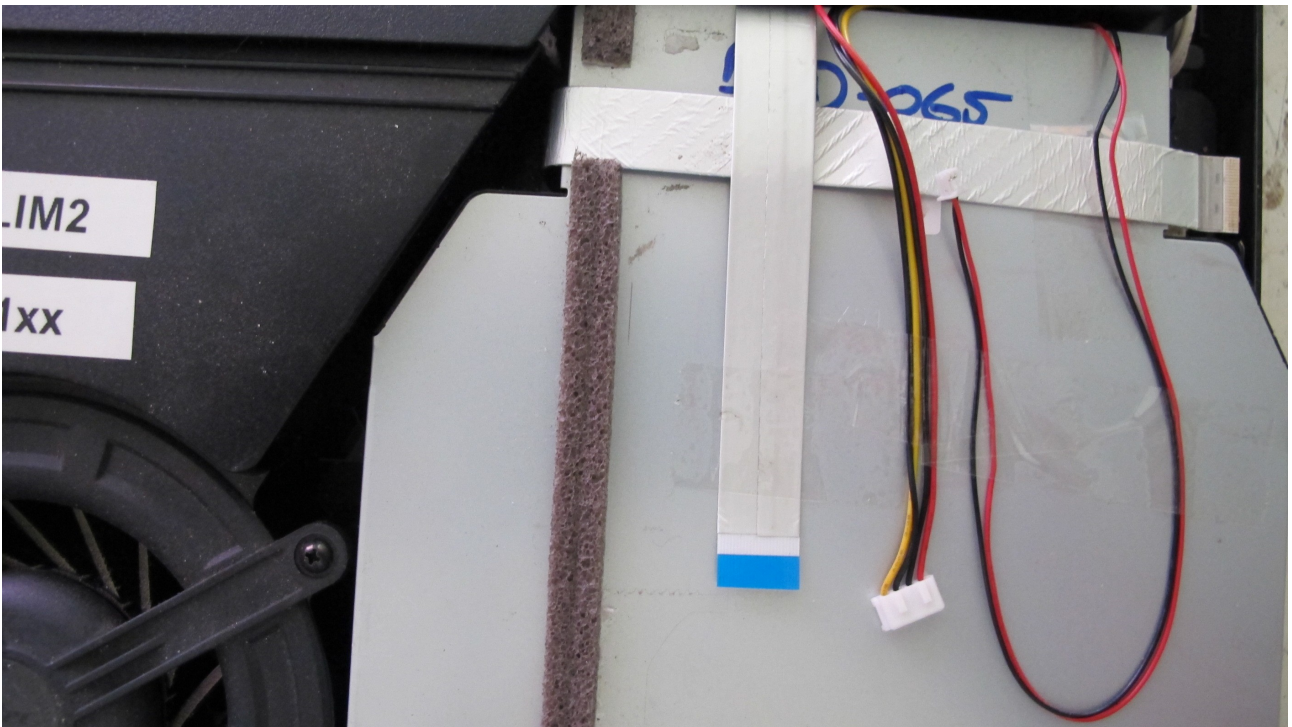
1 – Remove the cover from your PS3, the power supply and BD drive. Remove the BD drive power supply cable and the original, Sony FFC



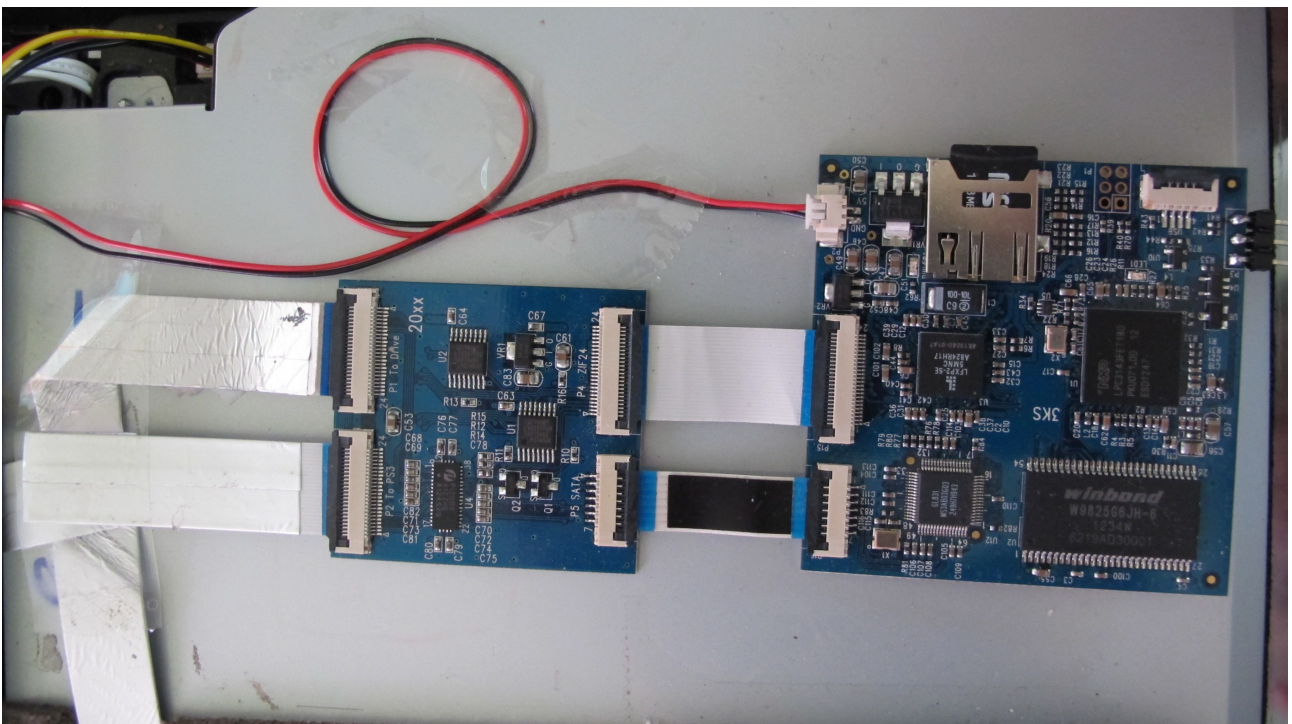
2 – Install the 3K3Y FFC and power cable



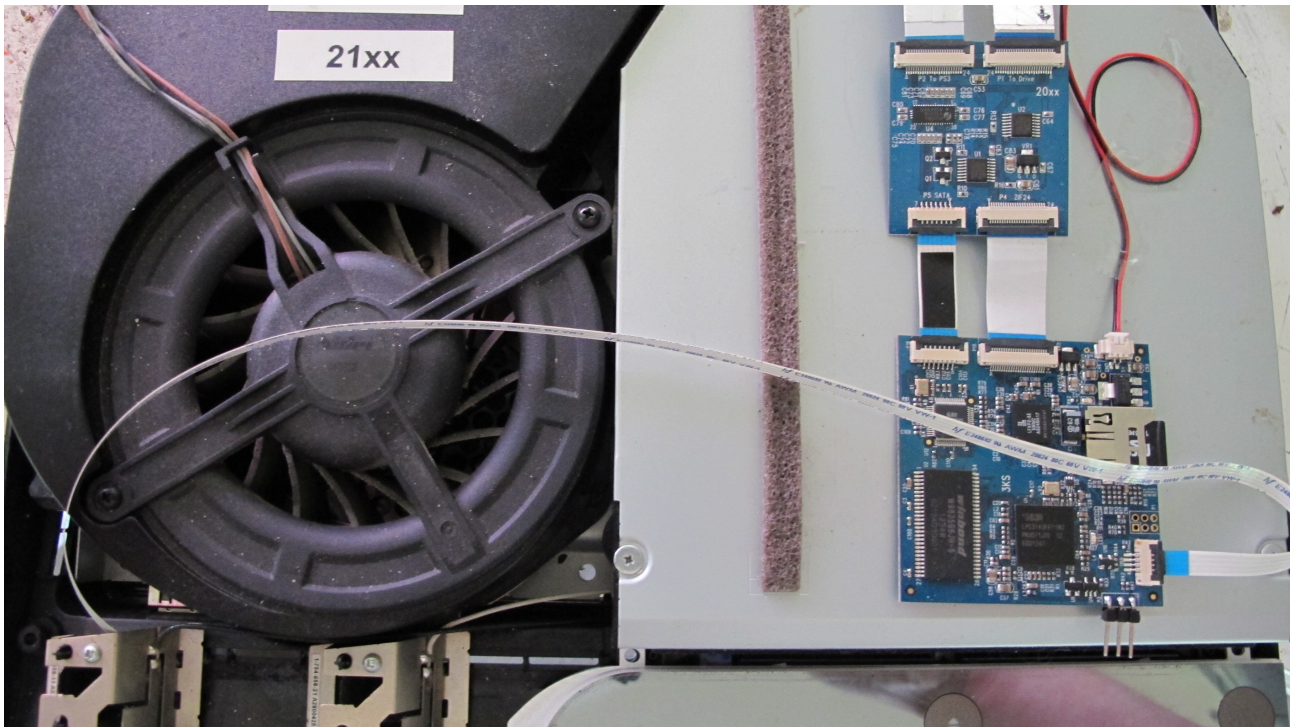
3 – Connect the original Sony FFC to the PS3 BD drive, replace the PS3 power supply and PS3 BD drive. Ensure the cables are routed between the power supply and BD drive.



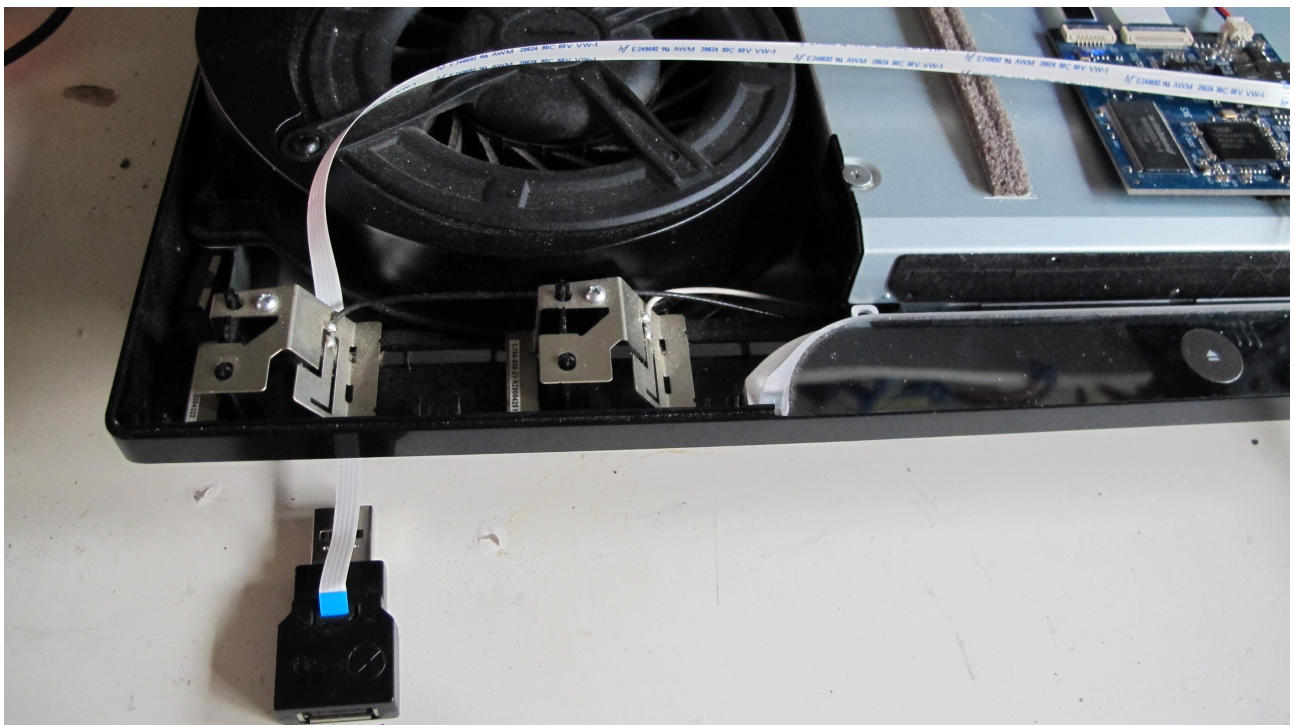
4 - Connect the 3K3Y main PCB and the 20xx adapter using the short FFCs supplied. Connect the power cable to the PS3 BD drive. Connect the BD drive to the adapter ZIF connector labelled 'P1 To Drive' and the PS3 to the adapter ZIF connector labelled 'P2 To PS3'. Secure the 3K3Y and adapter PCB to the top of the BD drive. Copy your 3dump.bin file to the supplied micro SD card and insert it into the 3K3Y main PCB.



5 – Connect the USB FFC to the 3K3Y main board and route it to the front of the PS3, just above the USB ports are vents that will allow the FFC to be routed to the outside of the case.



6 – Connect the USB adapter to the USB FFC, ensure that the blue plastic reinforcement is facing the socket side of the adapter. Plug the adapter into one of the PS3's USB ports.



7 – Replace the PS3's cover.