

3K3y Ripper User Manual V1.1.0

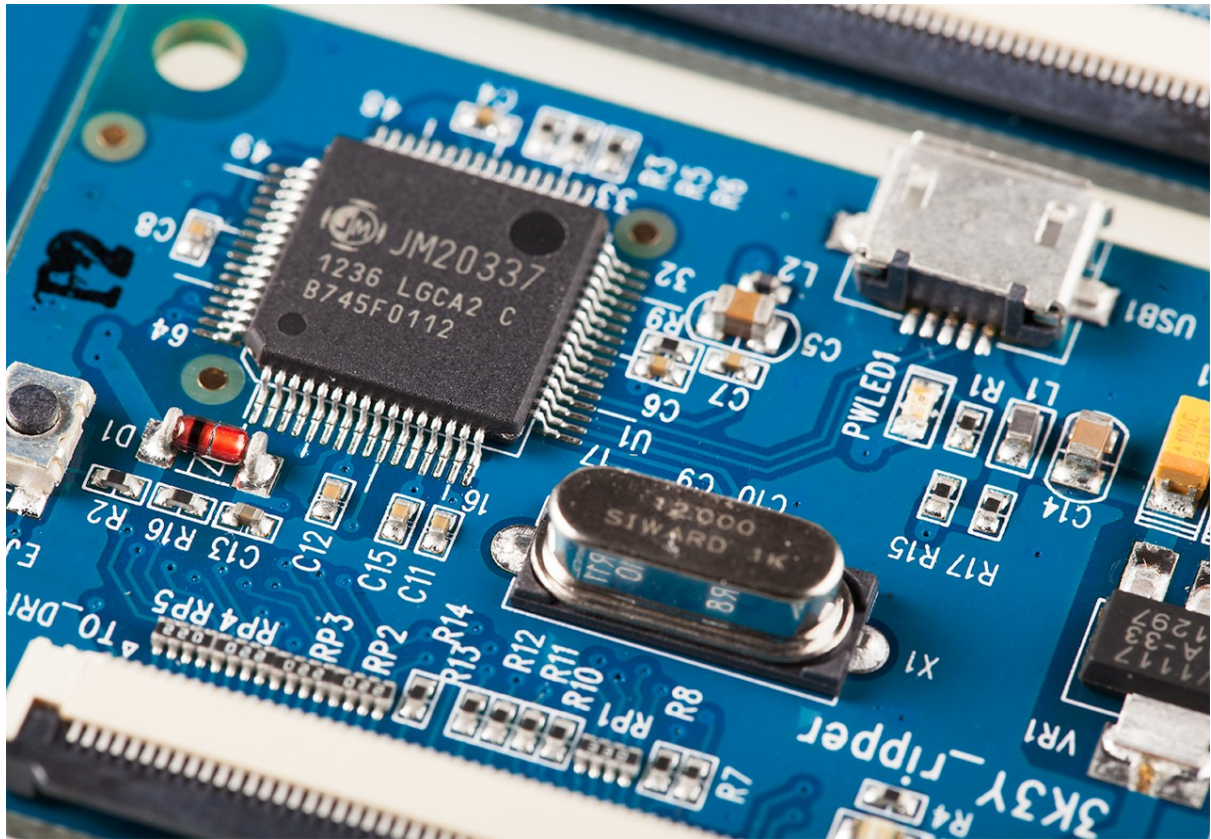


Table of Contents

3K3y Ripper User Manual V1.1.0.....	1
Installation.....	3
Software.....	3
Hardware.....	3
Setup.....	4
Ripping PS3 Games.....	5
Decrypting/Encrypting PS3 ISOs.....	7
Decrypting.....	7
Encrypting.....	8
Rebuilding ISOs.....	8
Rebuilding an ISO.....	8
Generating an IRD.....	9
Zip files.....	11
Output Directory.....	11
Default Keys.....	11

Installation

Software

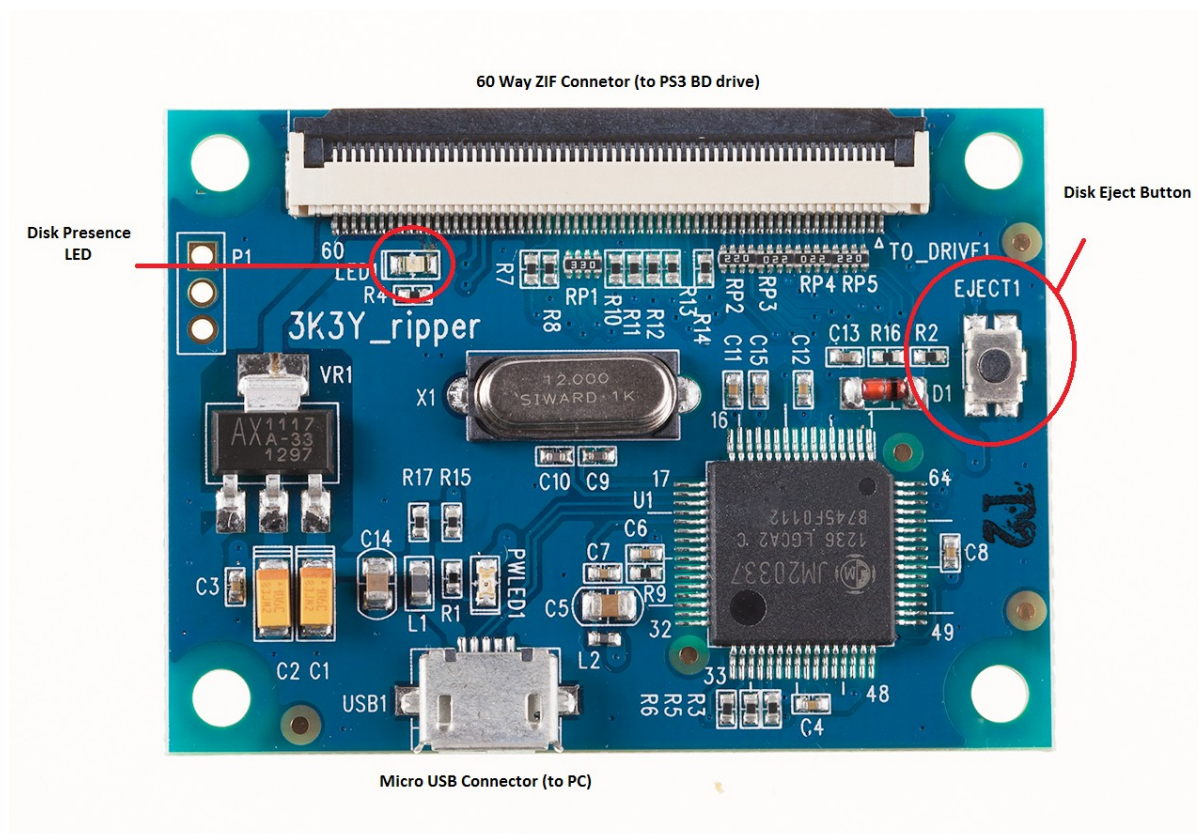
Download and install the 3K3Y Ripper software package.

Hardware (V1.0 PATA Only)

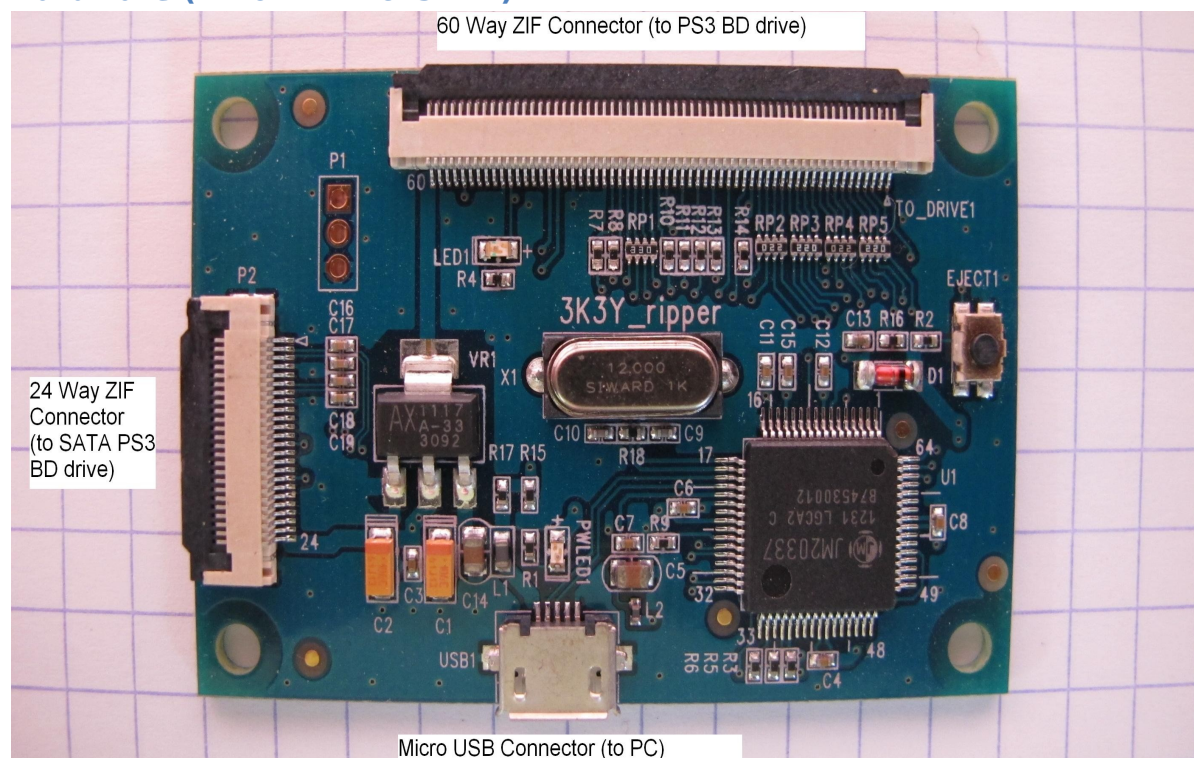
You will require the following parts from the 3K3Y kit:

- The 3K3Y Ripper PCB
- The 3K3Y Ripper Drive Power Cable
- A 60 way FFC Cable
- A micro USB cable

You will also require a Molex PC HDD power supply. You can use a standalone power supply or a spare connection from a PC power supply.



Hardware (V2.0 PATA & SATA)



You will require the following parts from the 3K3Y kit:

- The 3K3Y Ripper V2.00 PCB
- The 3K3Y Ripper Drive Power Cable
- A 60 way FFC Cable (PATA PS3 BD drives)
- A 24 way FFC Cable (SATA PS3 BD drives)
- A micro USB cable

Note: You must use the correct 24 way FFC cable for your drive type:

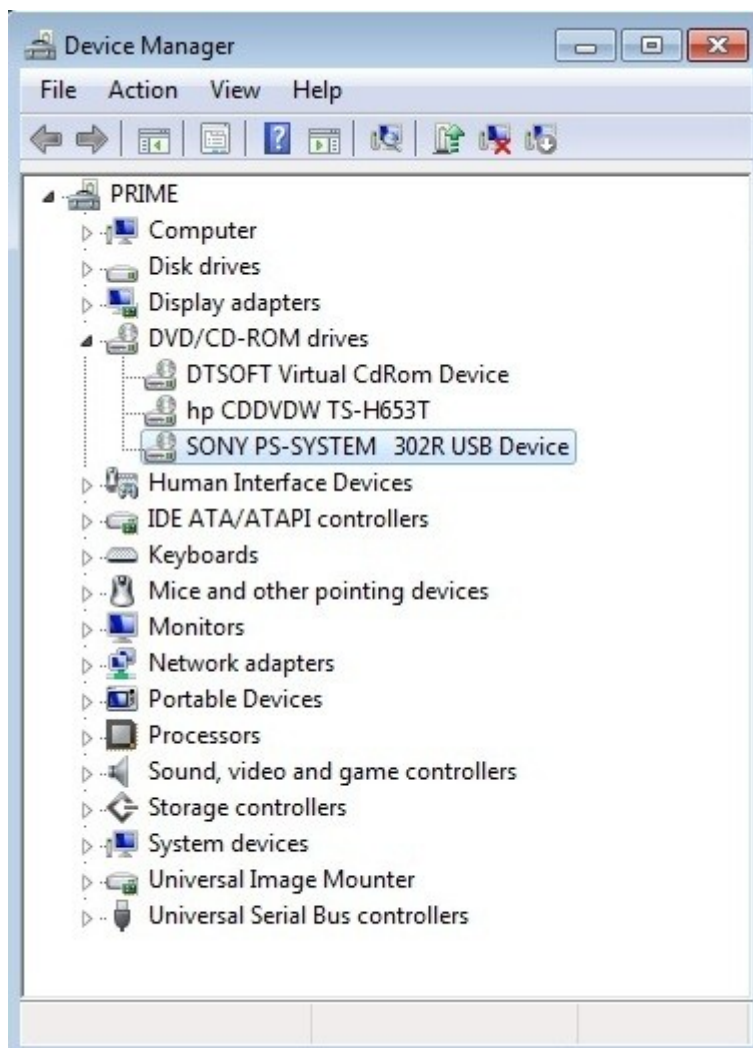
- FAT SATA drives, use the 3K3Y supplied FFC
- SLIM SATA drives, use the original Sony FFC

Setup

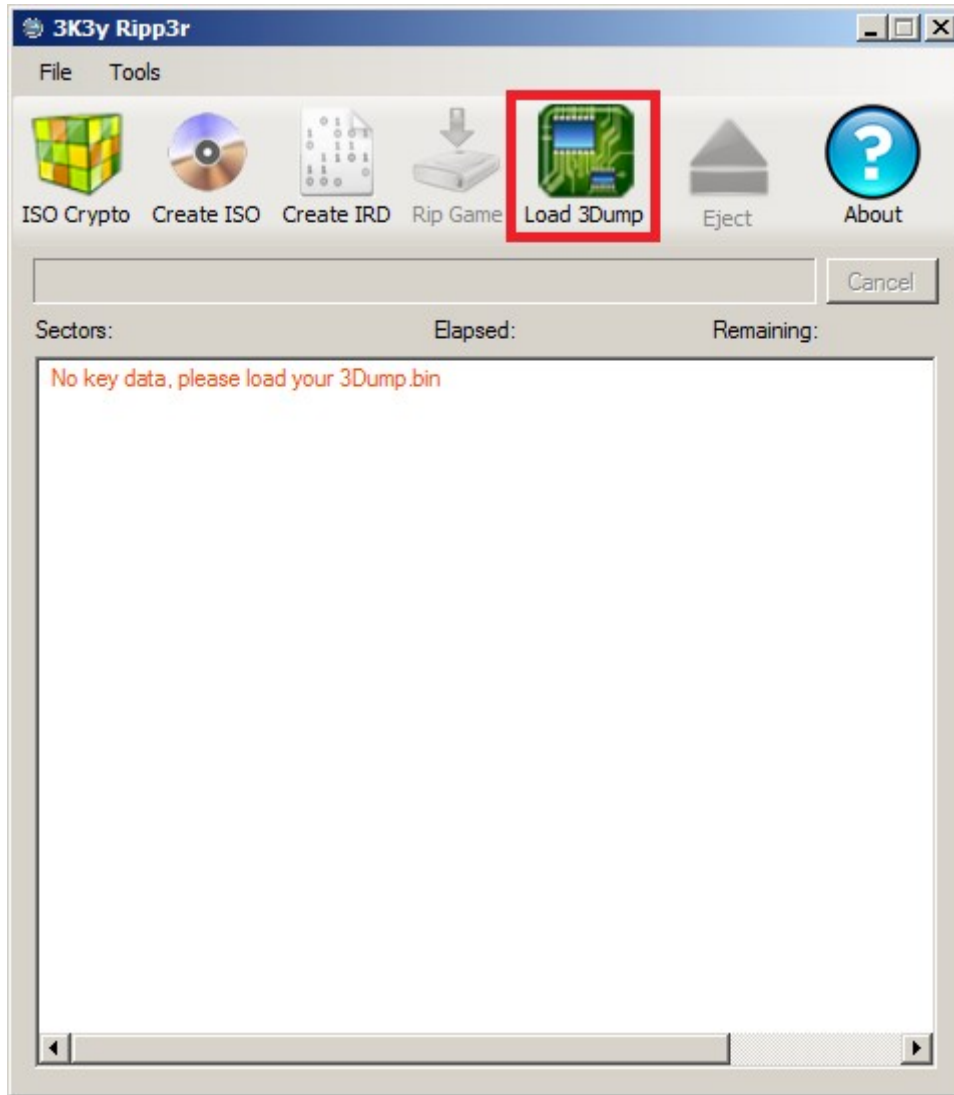
Connect the PS3 BD drive to the 3K3Y Ripper PCB using the 60 way FFC. Ensure that the 3K3Y Ripper PCB is on an insulated surface.

- Connect the power supply to the PS3 BD drive using the supplied power cable.
- Connect the 3K3Y Ripper PCB to the host PC using the supplied micro USB cable.

- The host PC will now detect the PS3 BD drive, see Figure 2
- Start the 3K3Y Ripper App



Before you can use the 3K3Y Ripper you must load the drive keys for your PS3 BD drive. To do this, click the Load 3Dump button and navigate to your 3Dump.bin file. The 3K3Y Ripper app will store the key data for future use.



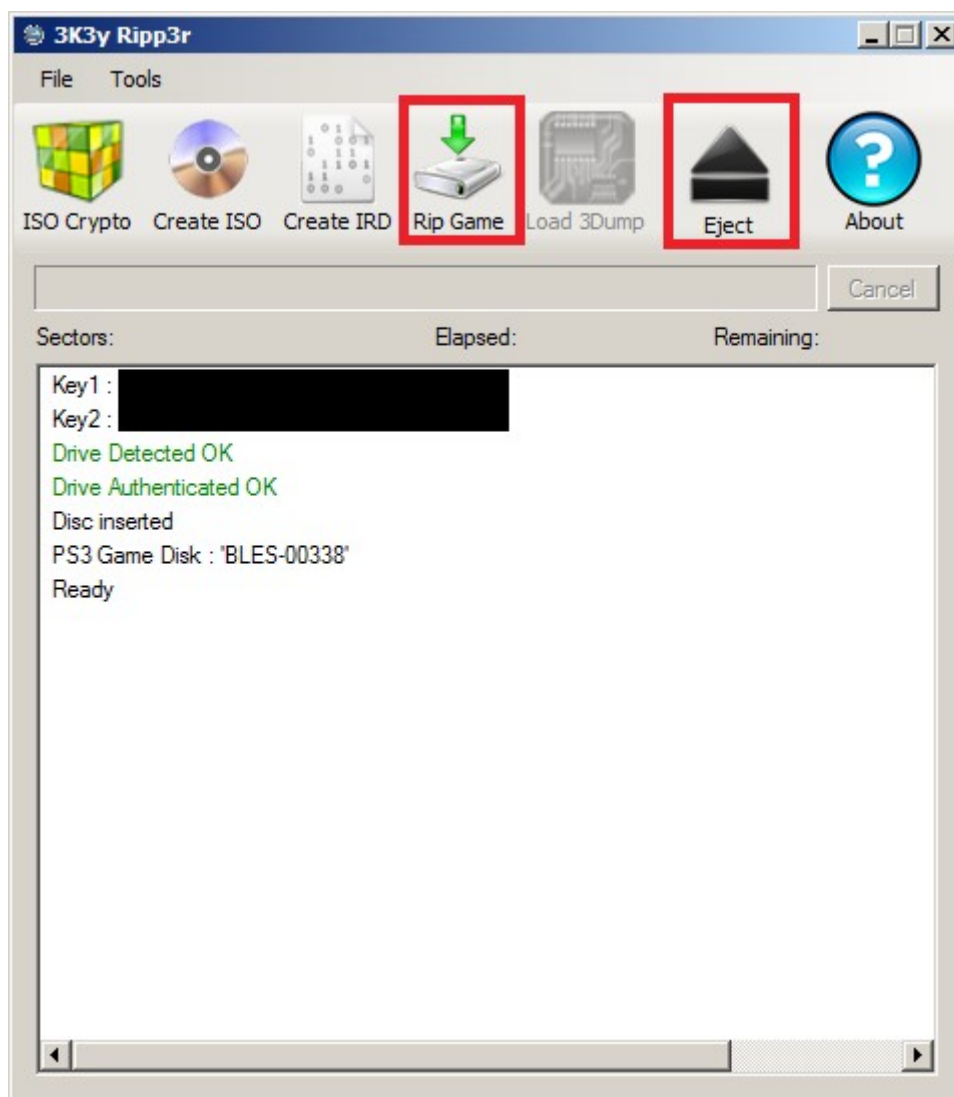
Once the 3K3Y Ripper app has loaded the PS3 BD drive keys it will attempt to authenticate the drive. When the authentication has succeeded you may begin to use it to rip PS3 games.

Ripping PS3 Games

Ripping PS3 games is a simple procedure:

- Connect the 3K3Y Ripper PCB and the PS3 BD drive as described above.
- Start the 3K3Y Ripper app, the app will detect the PS3 BD drive and authenticate it.
- Insert a PS3 game into the PS3 BD drive, the 3K3Y Ripper app will detect the PS3 game. The 3K3Y Ripper PCB indicates the presence of a disk via the 3K3Y Ripper disk presence LED.

Note: The 3K3Y Ripper app cannot detect the PS3 BD drive if there is a game disk loaded, you must eject any disk loaded in the drive.

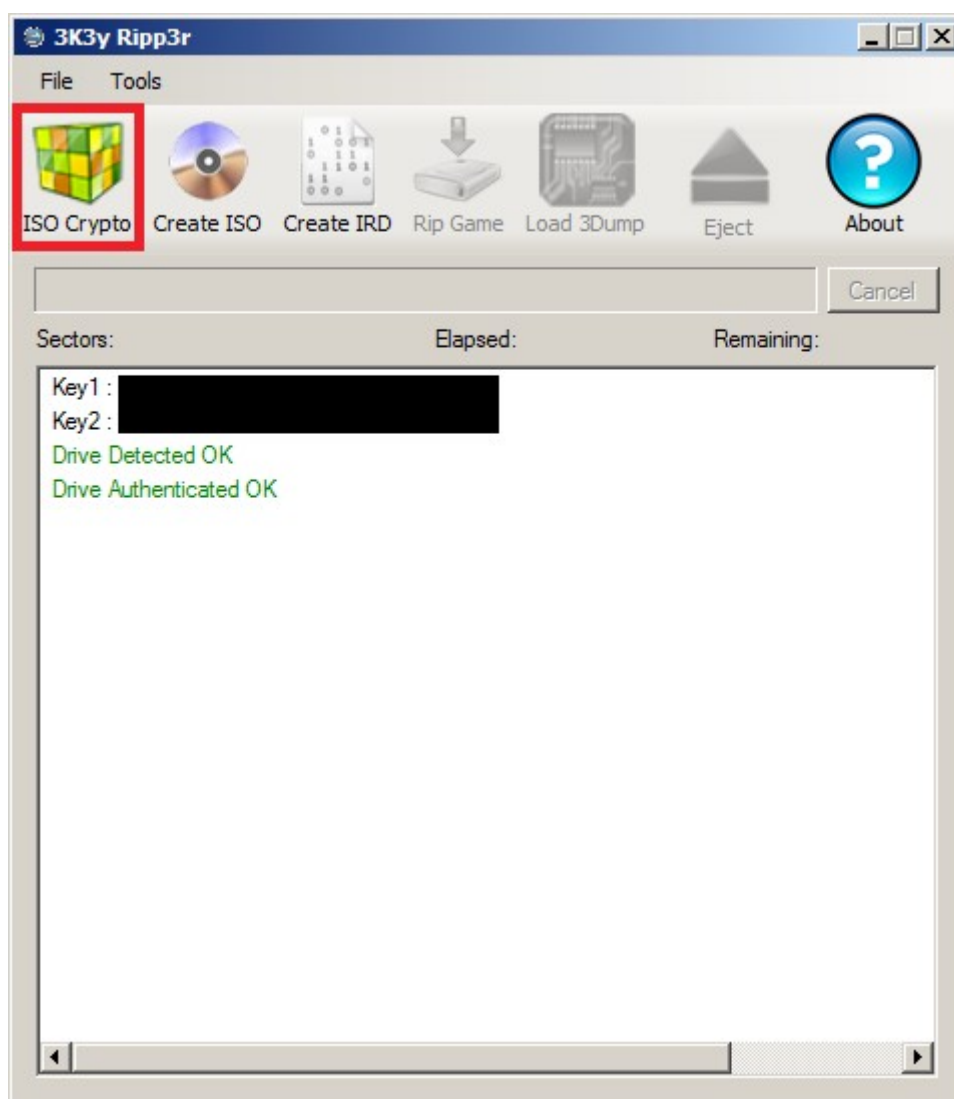


- Click the Rip Game button and select a destination for ripped game ISO.
- Click the Eject button to unload the currently inserted disk.

Decrypting/Encrypting PS3 ISOs

You may wish to compress (zip) your game rips for archiving. PS3 games are, however, encrypted and do not compress well. Before attempting to compress a PS3 game you should decrypt it using the 'ISO Crypto' function of the 3K3y Ripp3r.

You do not need a PS3 BD drive connected to decrypt or encrypt game ISOs.



Decrypting

Select the encrypted ISO you want to decrypt (a .iso file), 3K3y Ripp3r will detect the encrypted ISO and decrypt it for you. The decrypted ISO (a .dec file) will be created in the same directory as the original, encrypted ISO.

Encrypting

Encrypting an ISO is a very similar process, select the decrypted ISO you want to encrypt (a .dec file) and 3K3y Ripp3r will write the encrypted ISO (a .iso file) to the same directory

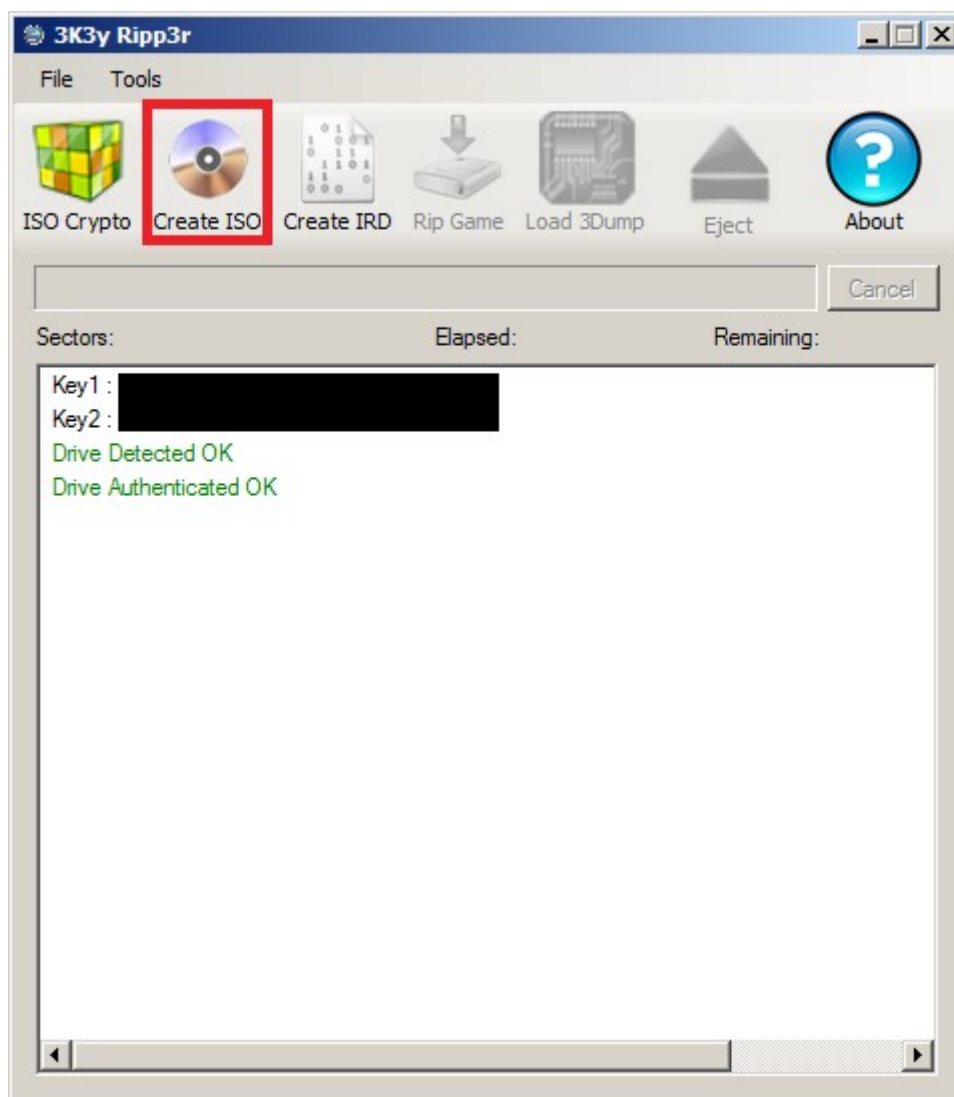
Rebuilding ISOs

The 3K3y Ripp3r application can rebuild a PS3 game ISO from a set of files and some additional information previously gathered from a 3K3y Ripp3r ISO. The additional data is stored in an ISO Rebuild Data (IRD) file.

During the ISO rebuild a number of MD5 hashes are calculated and checked against known good values from the IRD, if they don't match a warning is issued. This is important because PS3 game ISOs rebuilt with modified files are, at best easily detected and at worst, will not run.

You do not need a PS3 BD drive connected to rebuild PS3 game ISOs or to generate IRDs although you can only generate an IRD from a 3K3y Ripp3r PS3 ISO. Generating IRDs from rebuilt PS3 game ISOs is not supported.

Rebuilding an ISO

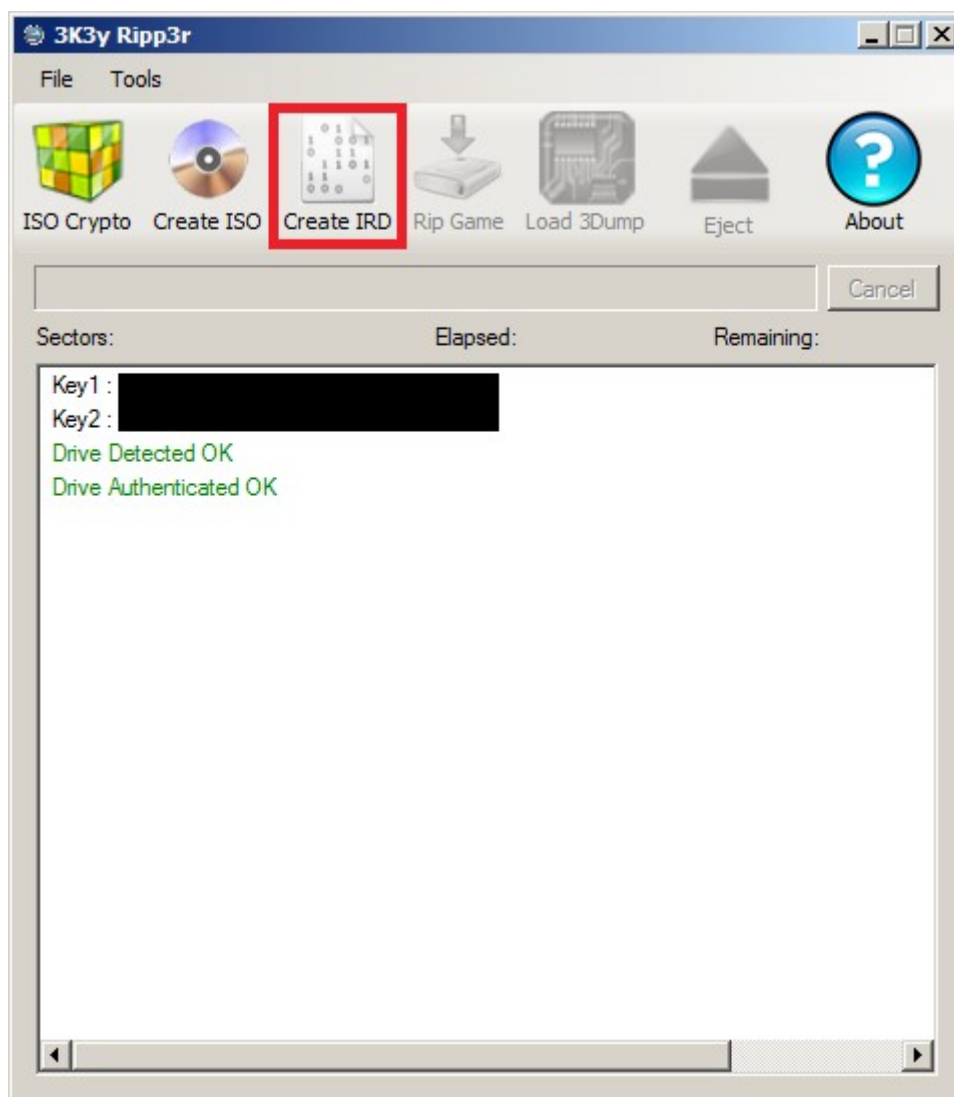


- Click the Create ISO button and select the directory containing the game files.
- Choose the directory and name for the ISO file you want to create
- Choose the IRD for the game

The 3K3y Ripp3r app will now attempt to rebuild the original game ISO.

Generating an IRD

An IRD file is required to rebuild an ISO from a set of files. The 3k3y Ripp3r App will copy the data from an ISO necessary to rebuild that ISO from just its files. The files in the ISO and the regions of the ISO are check-summed with the MD5 algorithm. All this information is stored in the IRD file for use when rebuilding the ISO.



- Click the Create IRD button
- Select the PS3 game ISO you want to create an IRD from
- Select the directory and filename for the IRD

The 3K3y Ripp3r app will now generate the IRD file.

Zip files

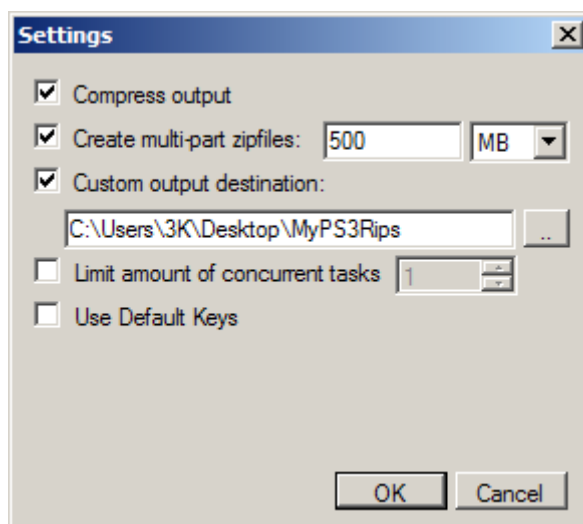
You may, optionally, choose to have the decrypted file compressed and saved directly to a 7zip archive. The archive can be written in pieces of fixed size. To select these options choose Menu **Tools | Settings**.

Decrypted ISOs can be directly extracted from an archive and re-encrypted 'on the fly', when prompted to select the source file select the 7zip archive.

By default ISO encryption and decryption will utilise as many CPU cores as are available. While this improves speed it may also make your PC slow or unresponsive. You may choose to limit the load on your system by using the 'Limit amount of concurrent tasks' option, 1 being the minimum load.

Output Directory

Files generated during the ISO encryption/decryption process are created in the same directory as the source file by default. The default output directory can be changed in the Settings Dialog (Menu **Tools | Settings**)



Default Keys

The 3K3y Ripp3r App can perform the PS3 remarry procedure to program a new set of keys into a PS3 BD drive. This allows you to use a drive other than that from your PS3 console without knowing the keys currently programmed into the drive.

IMPORTANT: Do not program the Default Keys into a drive that you are using with a PS3. You will not be able to use the drive with the PS3 if you overwrite its keys.