

Cobra ODE

Drive Motor Controller Installation v1.0



January 2015

The Cobra DMC is used to control the drive motor on FAT, 2K/2K1, 2K5 and 3K series PS3. It is used in conjunction with all versions of Cobra ODE and the Cobra ODE 2.3 FW/1.3 tools to bypass the checks on PS3 4.60 and 4.66+ OFW.

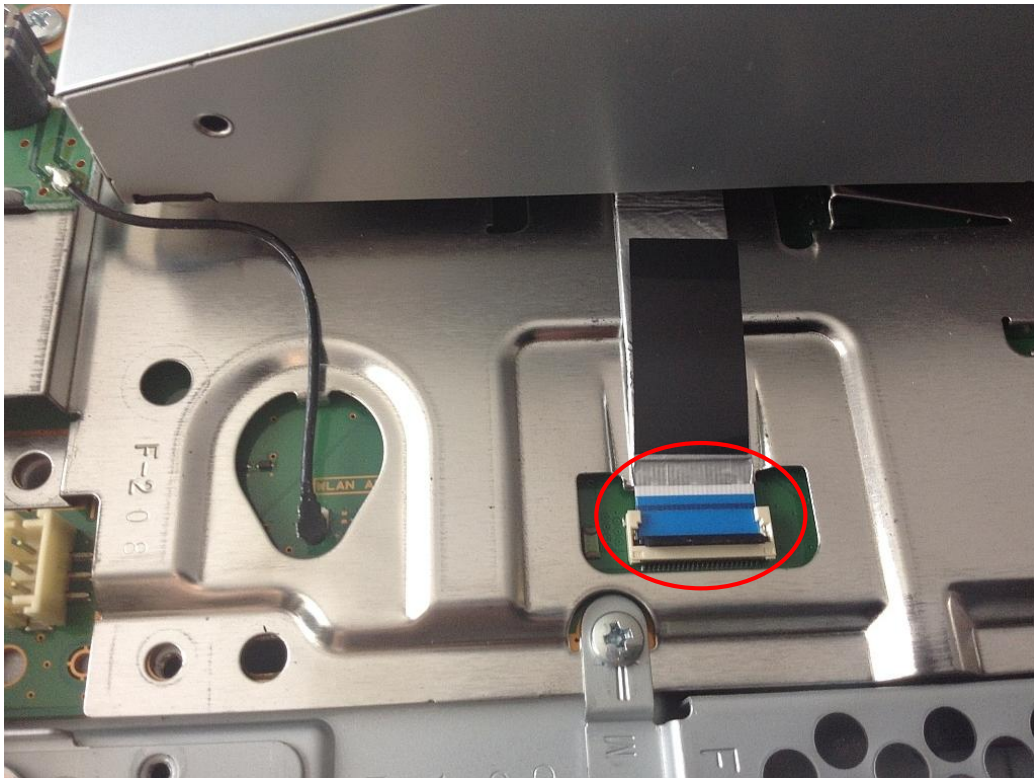
The DMC is compatible with all currently available Cobra ODE PCB revisions (3.xx, 4.20/A, 4.20 QSV, 4.30A, 5.1B and 5.30A).

Please refer to table below for cable usage according to console version:

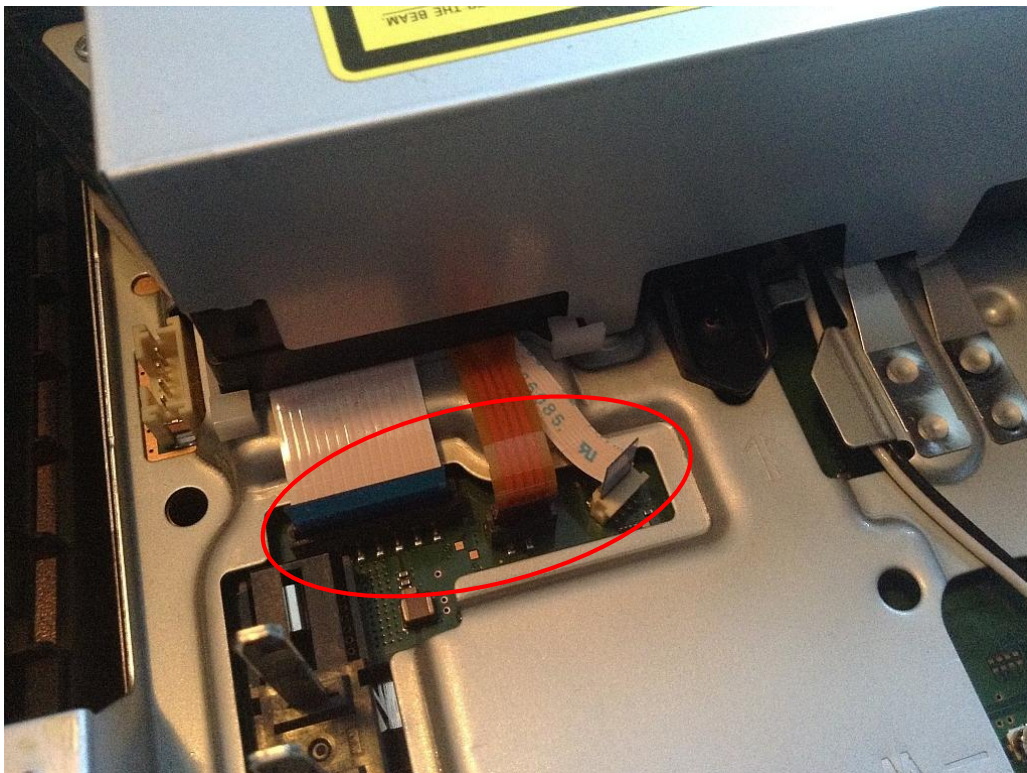
Console version	Console MB, or Drive daughterboard (BMD-XXX) to MB connector on DMC	Drive Motor Assembly to DRV connector on DMC	DMC to USB ADAPTER
FAT	SAME SIDE 8PIN FFC	SAME SIDE 8PIN FFC	SAME SIDE 8PIN FFC
2k/2k1	OPPOSITE SIDE 8PIN FFC	OPPOSITE SIDE 8PIN FFC	SAME SIDE 8PIN FFC
2K5/3K	SAME SIDE 8PIN FFC	SAME SIDE 8PIN FFC	SAME SIDE 8PIN FFC

Installation steps:

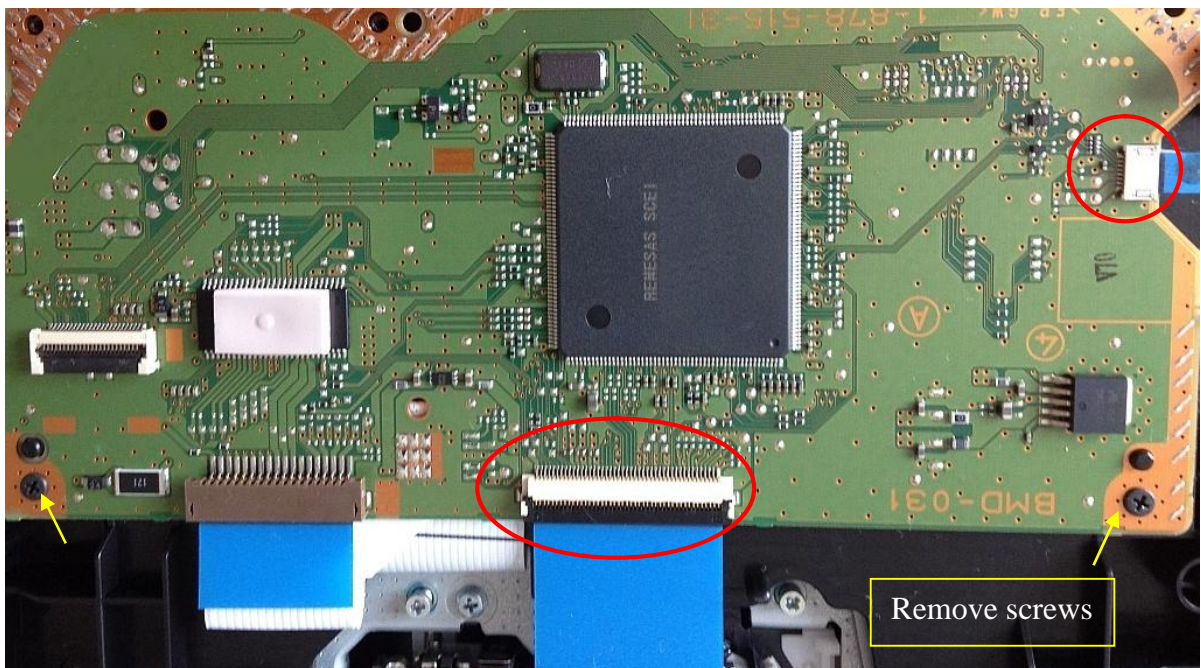
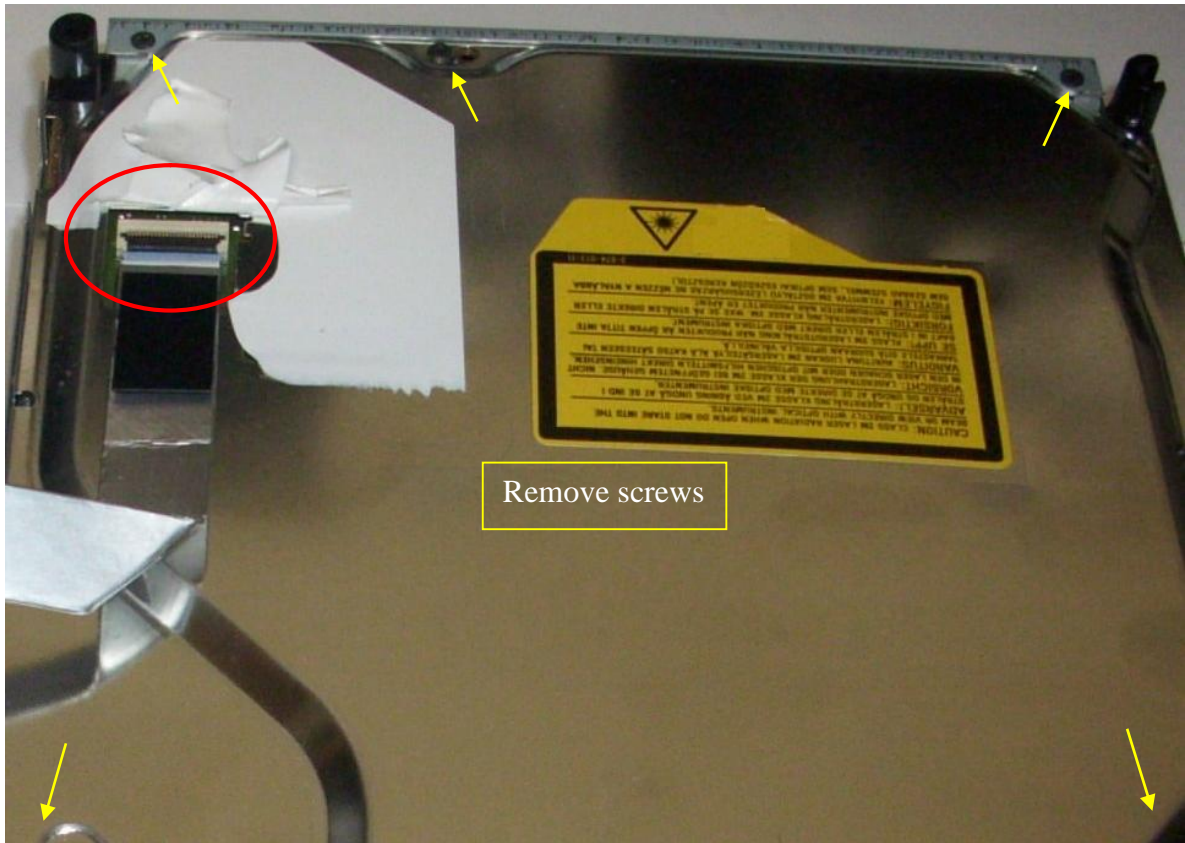
1a) Disconnect your BD drive from PS3 as shown below [CECHL shown here]:



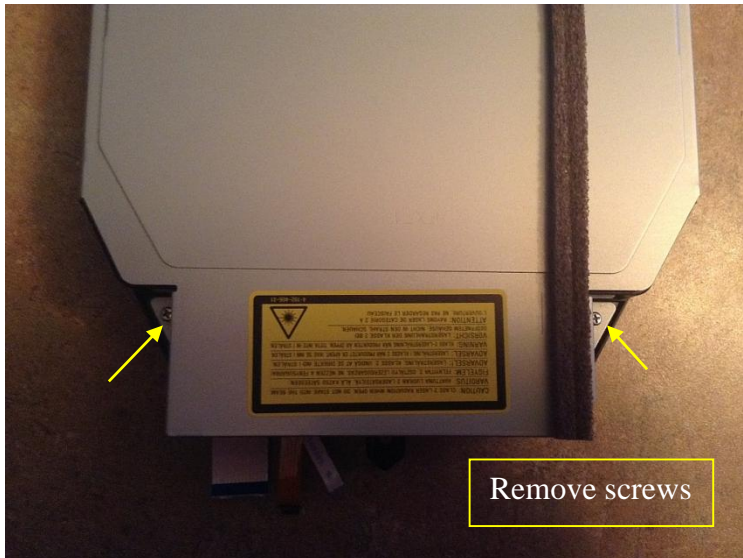
1b) [2k5 shown here]:



2a) Disconnect cables from drive and Remove the metal shield. [CECHL shown here]:

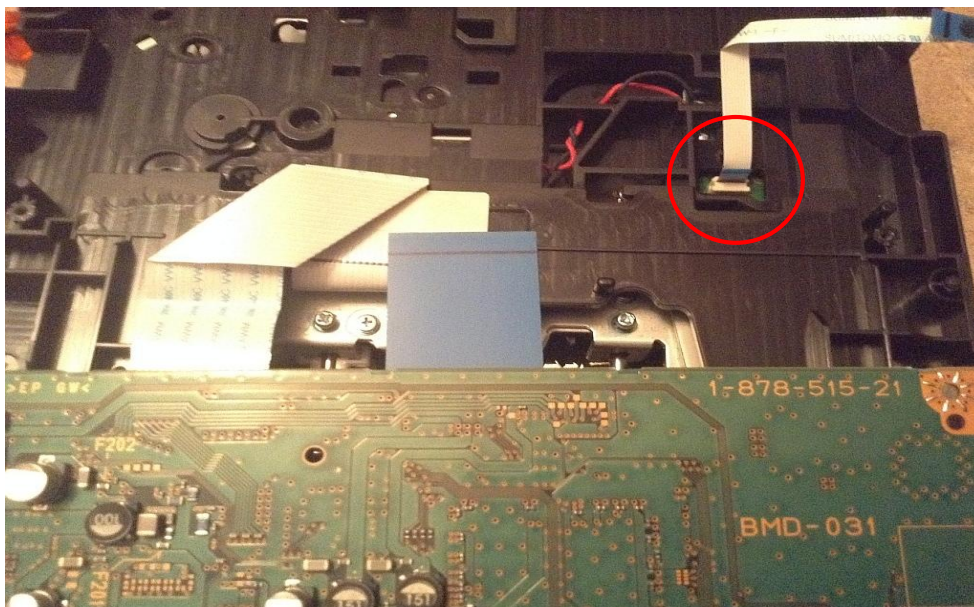
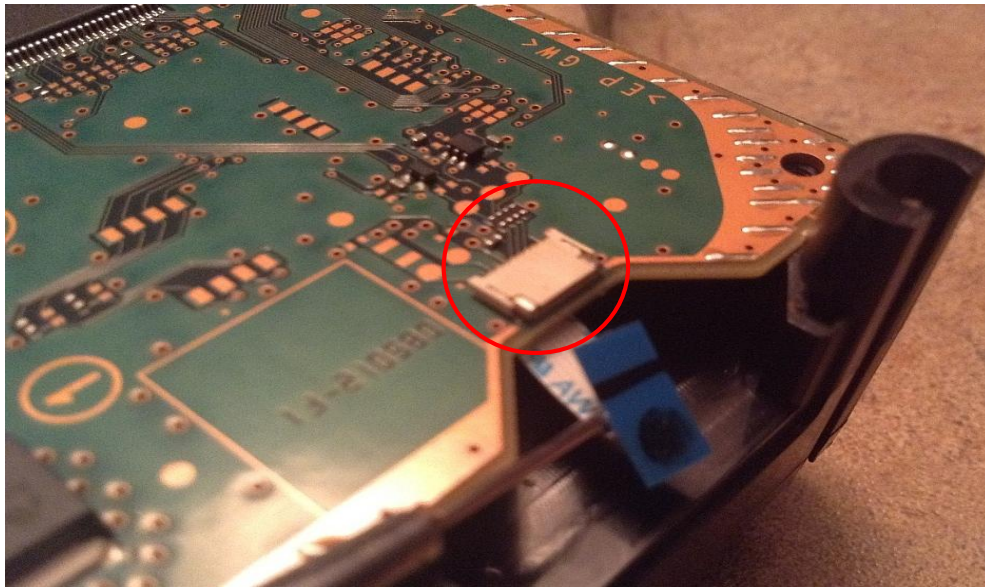


2b) Some Models need to remove the plastic assembly top cover of drive. [2k5 shown here]:

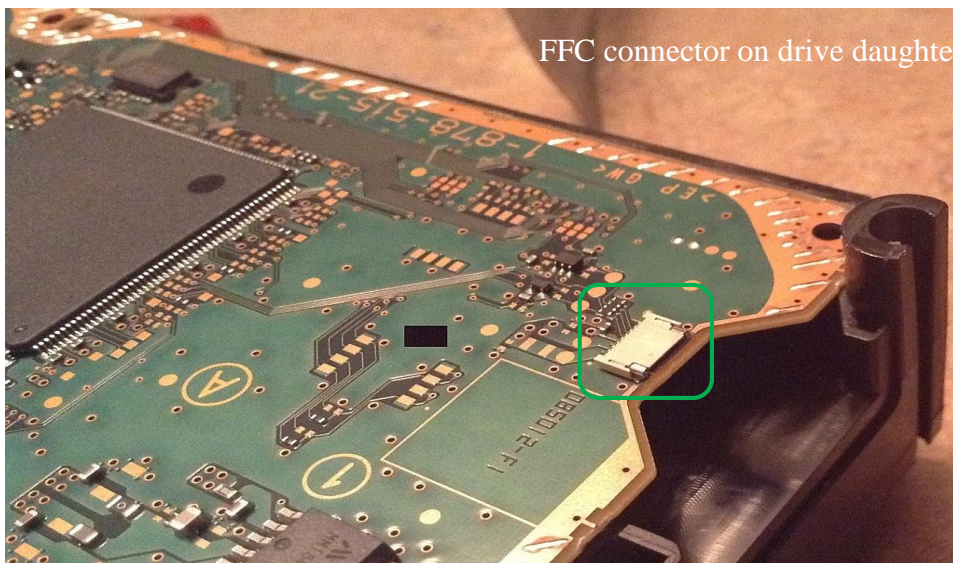


If you have FAT/2k/2k1 console follow step 3a, if you have 2k5 or 3k console skip step 3a) and follow step 3b)

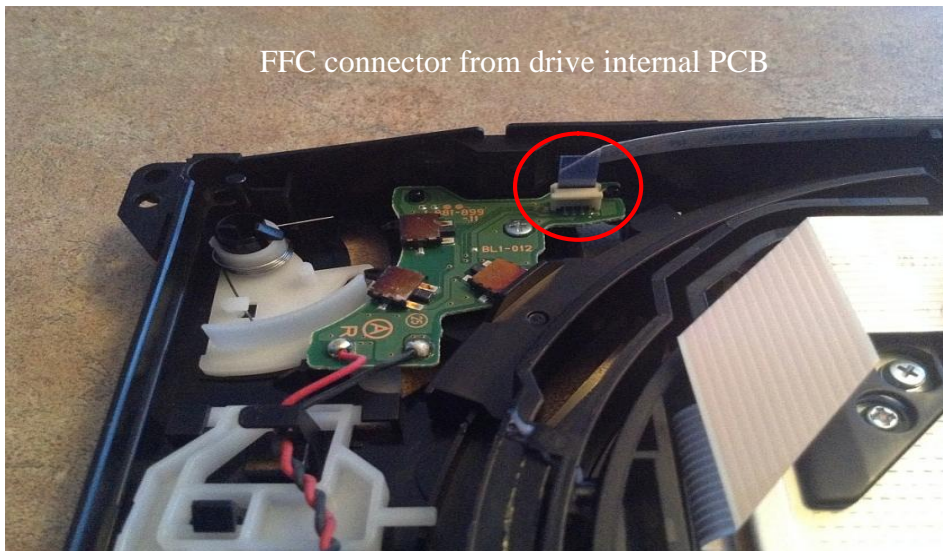
3a) Disconnect the 8 pin FFC from drive daughterboard (FAT and 2K/2K1) and drive motor PCB. [CECHL shown here]:



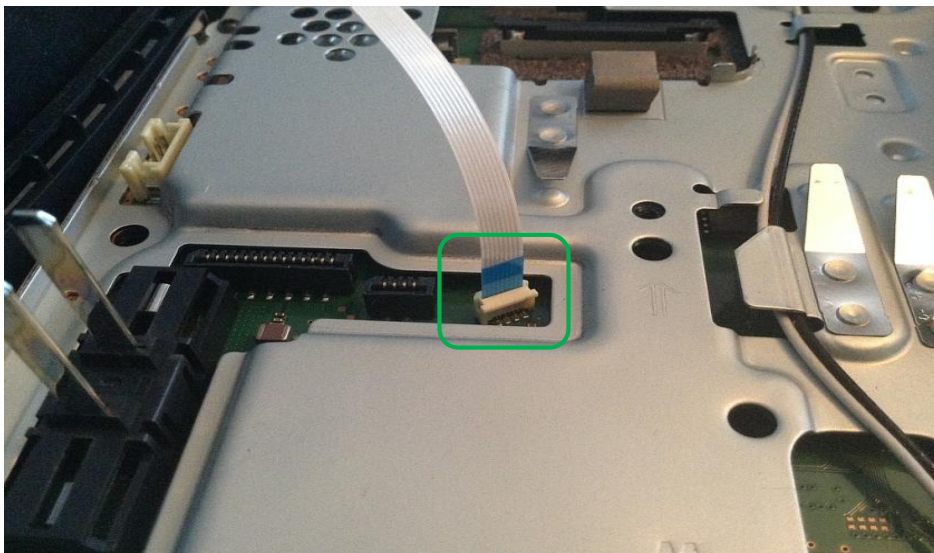
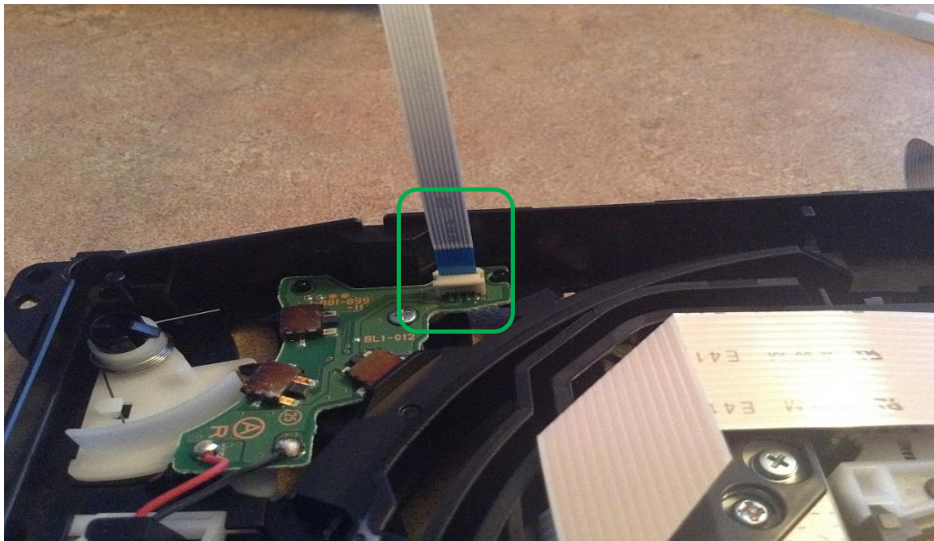
Then insert 8 pin FFC cable to the drive daughterboard (FAT and 2K/2K1) and another 8 pin FFC cable to the drive motor PCB. [CECHL show here]:



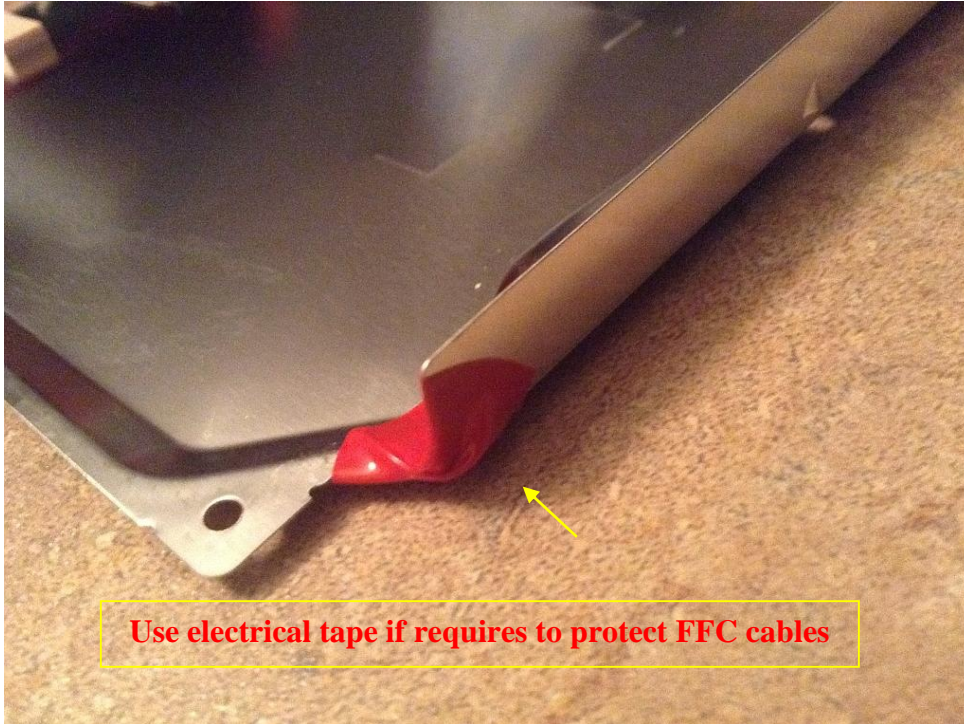
3b) Disconnect the 8 pin FFC from drive internal PCB for 2K5 and 3K as shown:



Then insert one 8 pin FFC cable to drive motor PCB and another 8 pin FFC cable to PS3 motherboard as shown below (2k5/3k shown) :

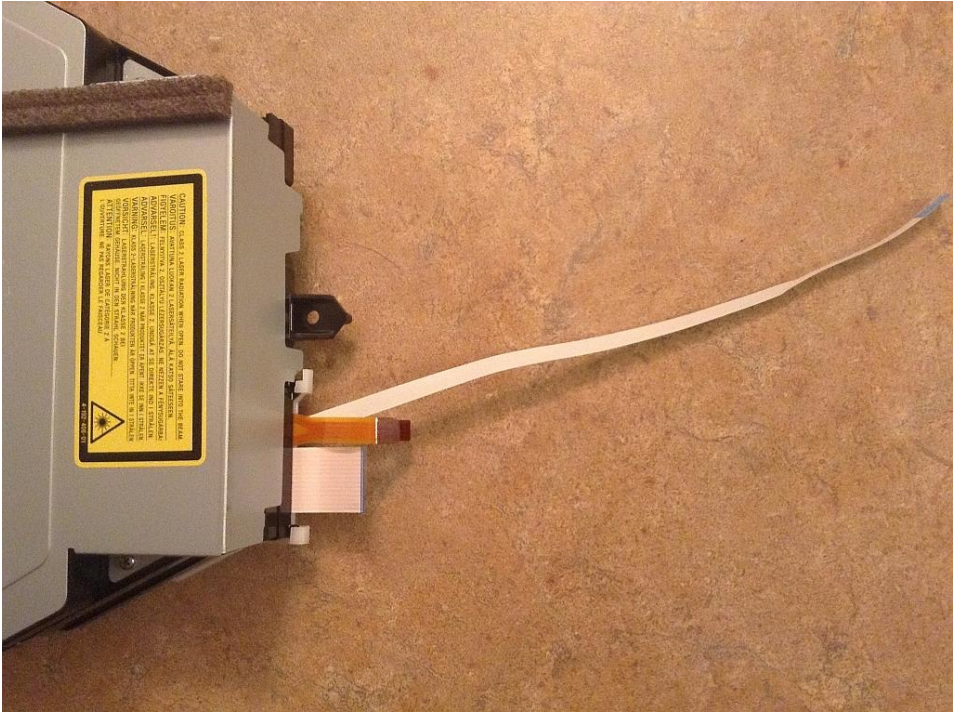


4) Reassemble your PS3 BD drive so it looks as shown [CECHL show here]:

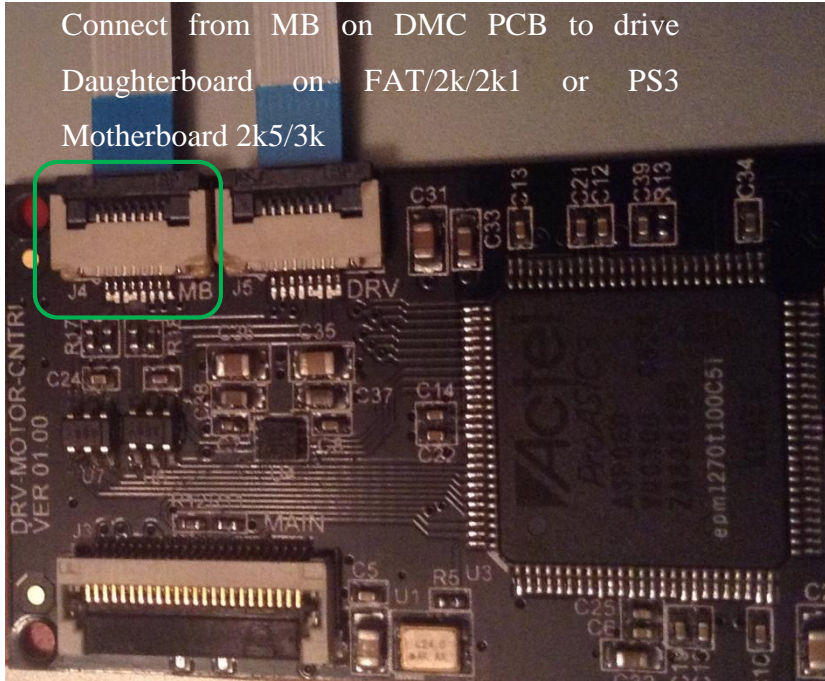




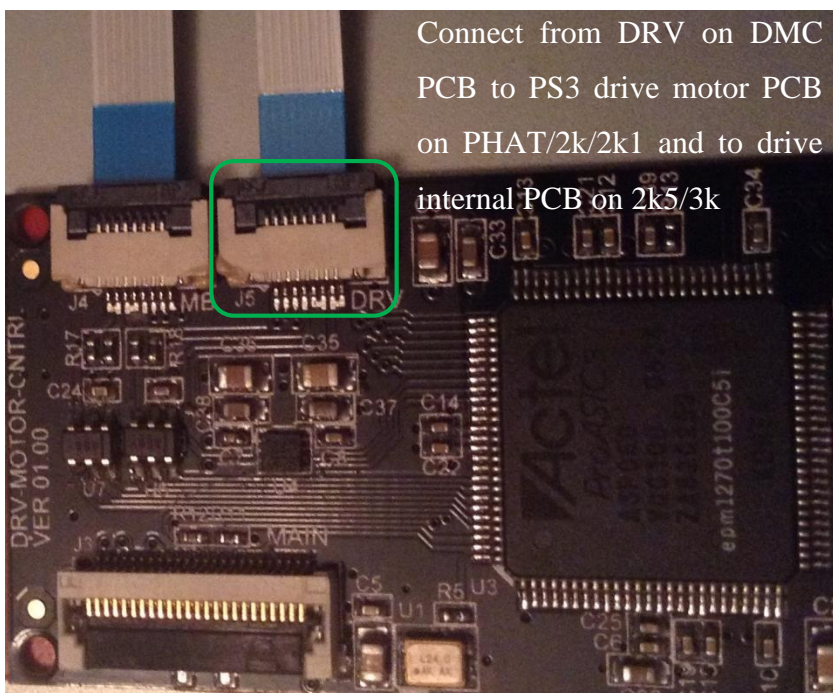
[2K5 shown here]:



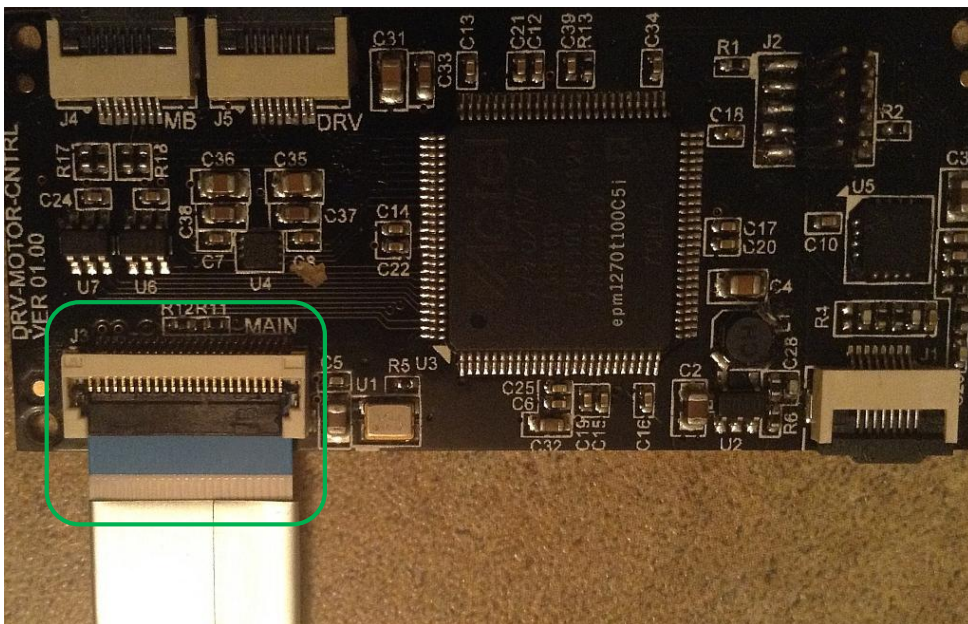
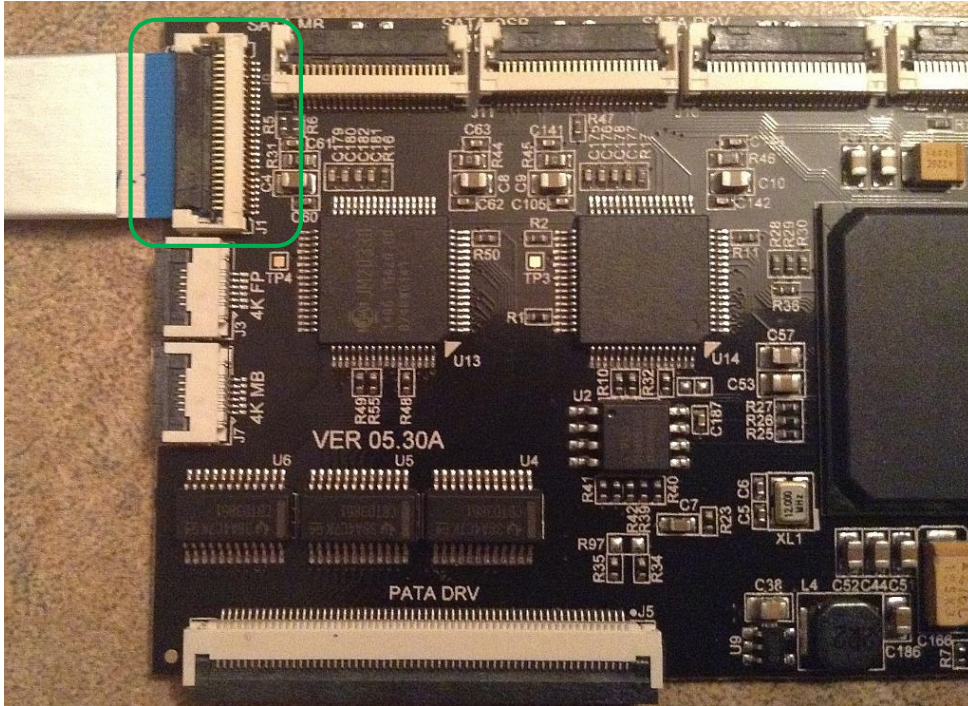
5) Connect the cable from drive daughterboard (FAT/2k/2k1) to MB on the DMC PCB FFC connector, or from PS3 Motherboard to MB connector on DMC for 2k5 and 3k consoles:



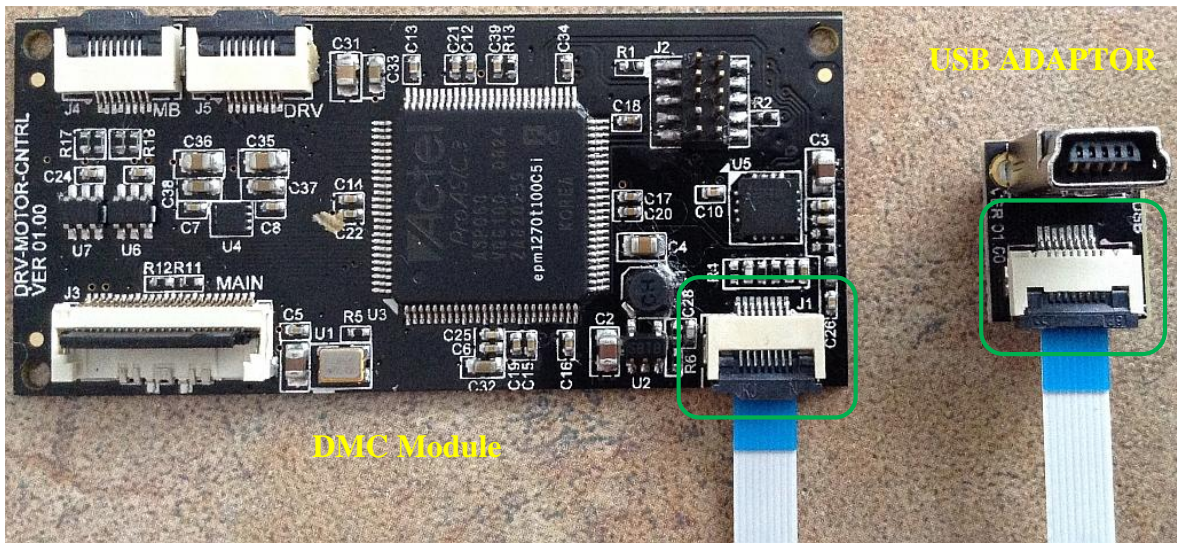
6) Connect the cable from drive motor PCB (2k5/3k) to DMC DRV connector and from drive internal PCB on 2k5/3k as shown below:



7) Connect the same side 24 pin FFC LVDS cable between JTAG on Cobra ODE and 24 PIN FFC LVDS connector on DMC as shown below (All console versions same for this step)



8) Connect 8 pins FFC cable from DMC to USB ADAPTOR as shown below.



We suggest to place the USB ADAPTOR at back of the PS3.

Note: Installation of the USB ADAPTOR is not obligatory and is only needed in case of future update.

9) Mount the DMC on top of your PS3 drive, ensuring that it does not obstruct the reassembly of your console casing.

10) Reassemble your PS3, you are now ready to use Cobra ODE on OFW 4.60 and 4.66+