

# Cobra ODE

USB QSB Installation v1.0



February 2015

The Cobra USB QSB is used as an alternative to the USB clip on PCB for PHAT, 2K/2K1, 2K5, 3K and 4K series PS3. It is used in conjunction with 5.xx and 4.30A versions of Cobra ODE and the Cobra ODE 2.4 FW/1.3 tools.

**Installation steps:**

1) Disassemble your PS3.

Disassembly guide for PHAT:

<https://www.ifixit.com/Teardown/PlayStation+3+Teardown/1260>

Disassembly guide for Slim:

<https://www.ifixit.com/Teardown/PlayStation+3+Slim+Teardown/1121>

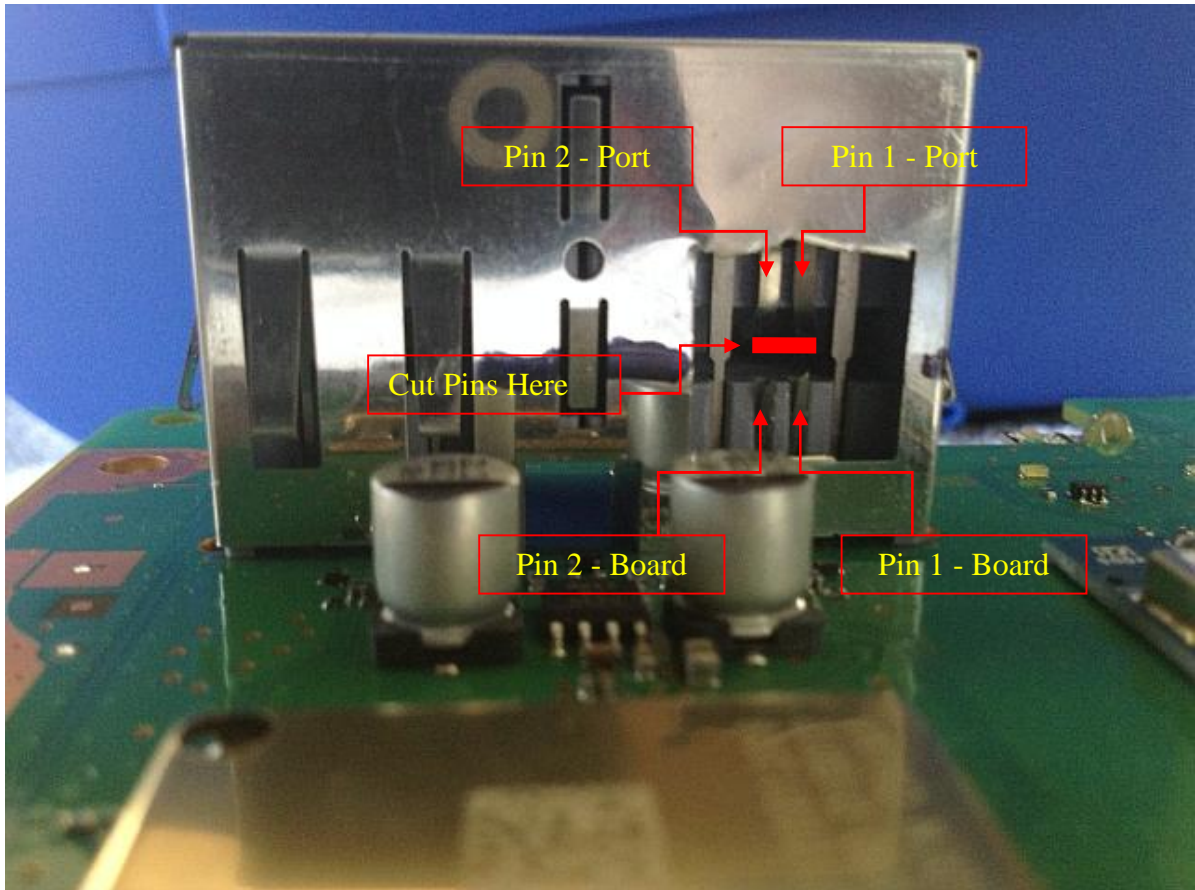
Disassembly guide for Super Slim:

<https://www.ifixit.com/Teardown/PlayStation+3+Super+Slim+Teardown/10670>

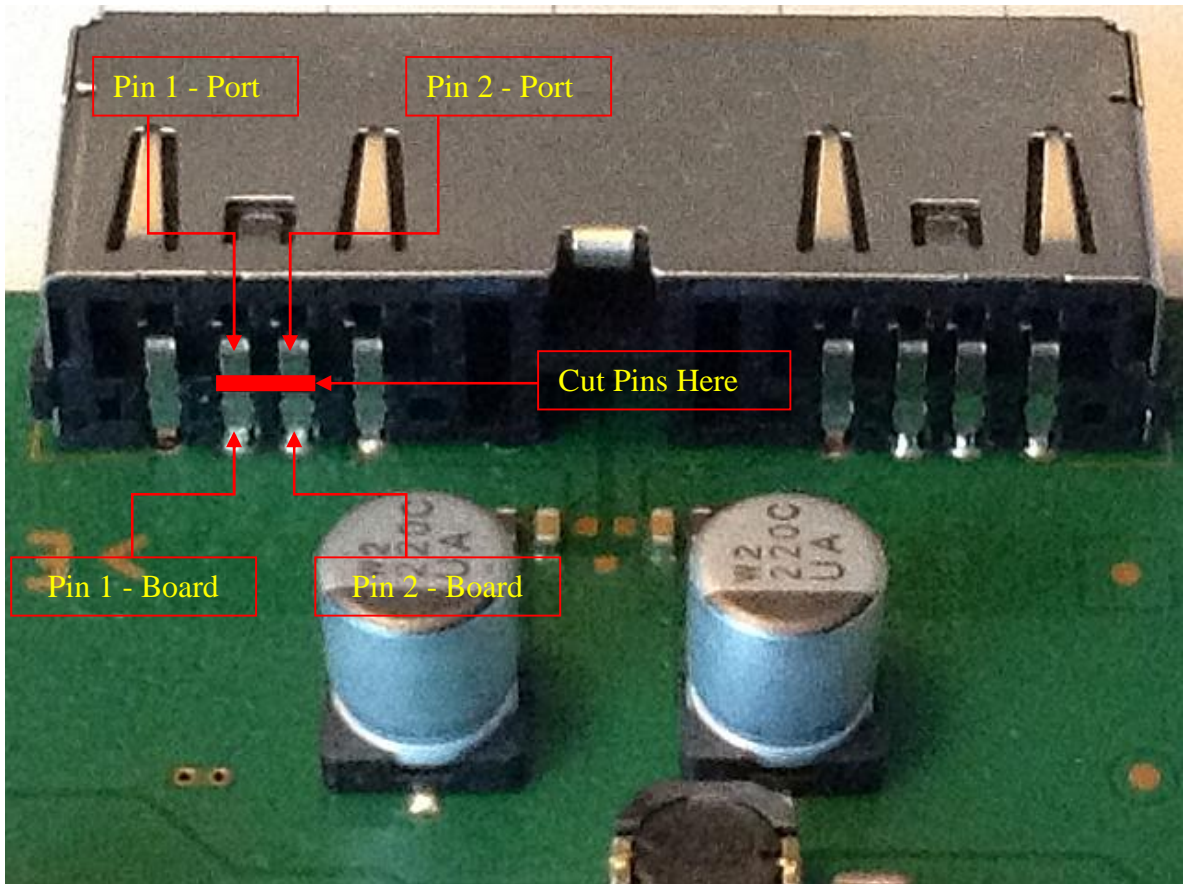
2) Cut the pins on the second port of your PS3 console as shown.

PHAT:

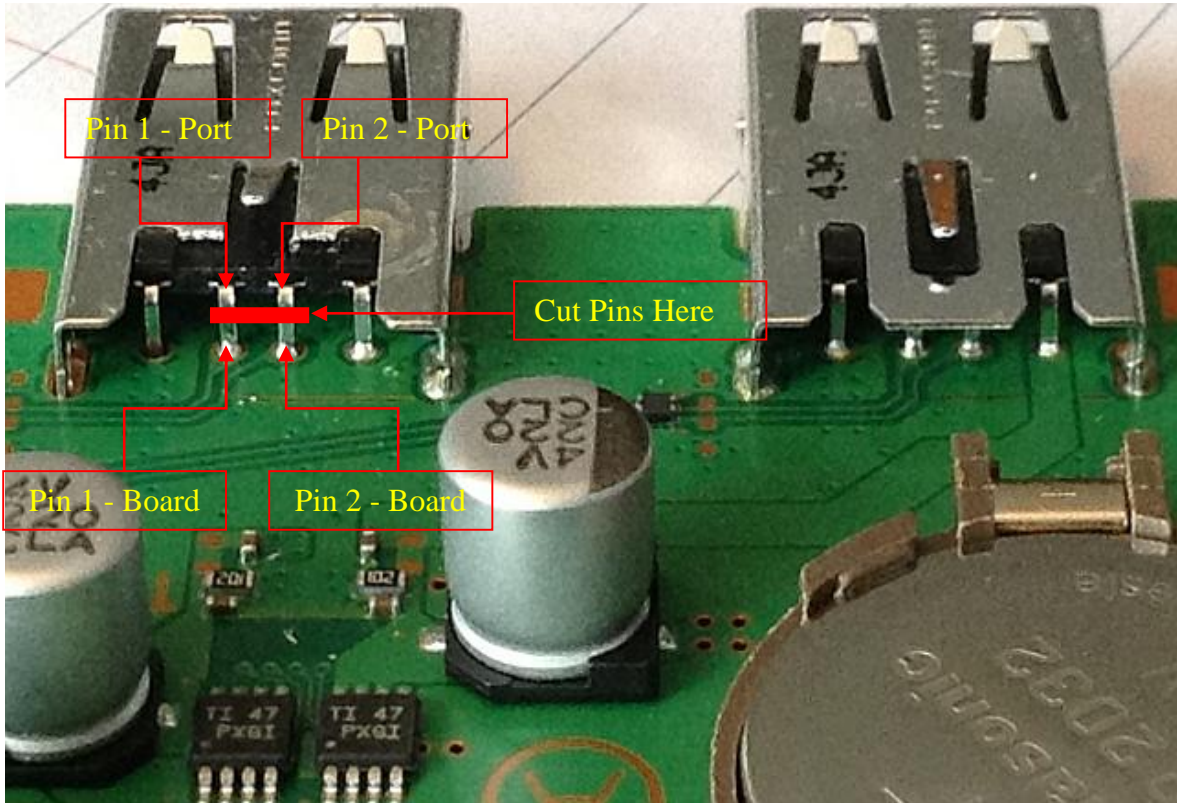
You may need to cut part of the metal case.[CECHL show here]:



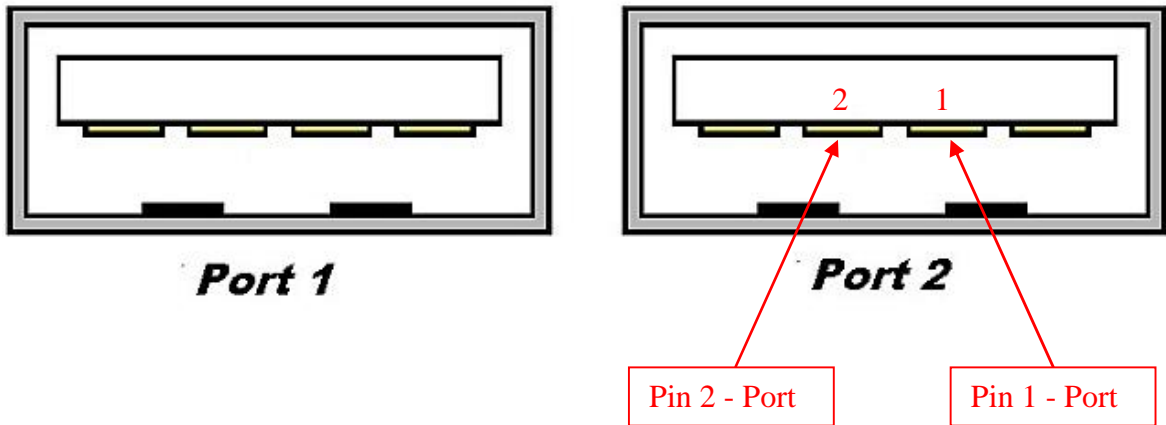
Slim [2K5 show here]:



Super Slim [4k3 show here]:

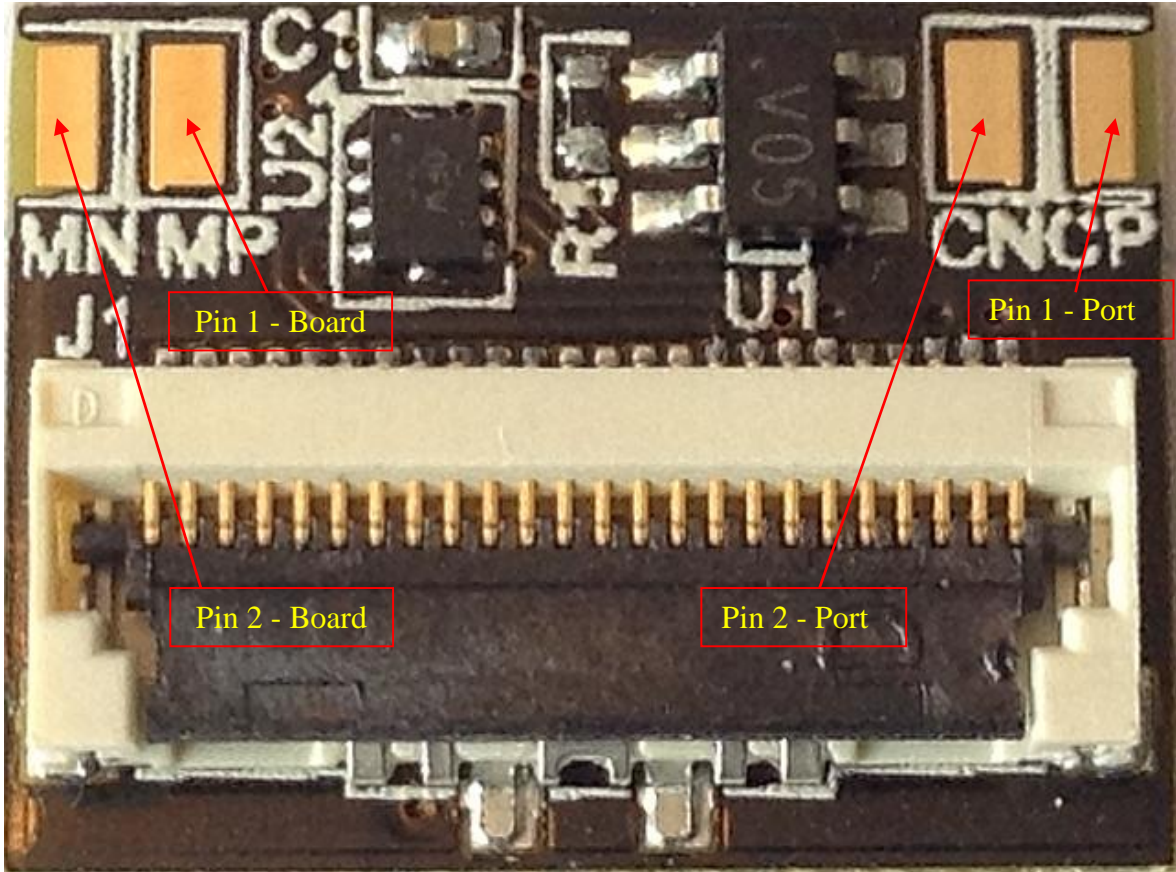


Identification of PINS from external front view of PS3 USB ports

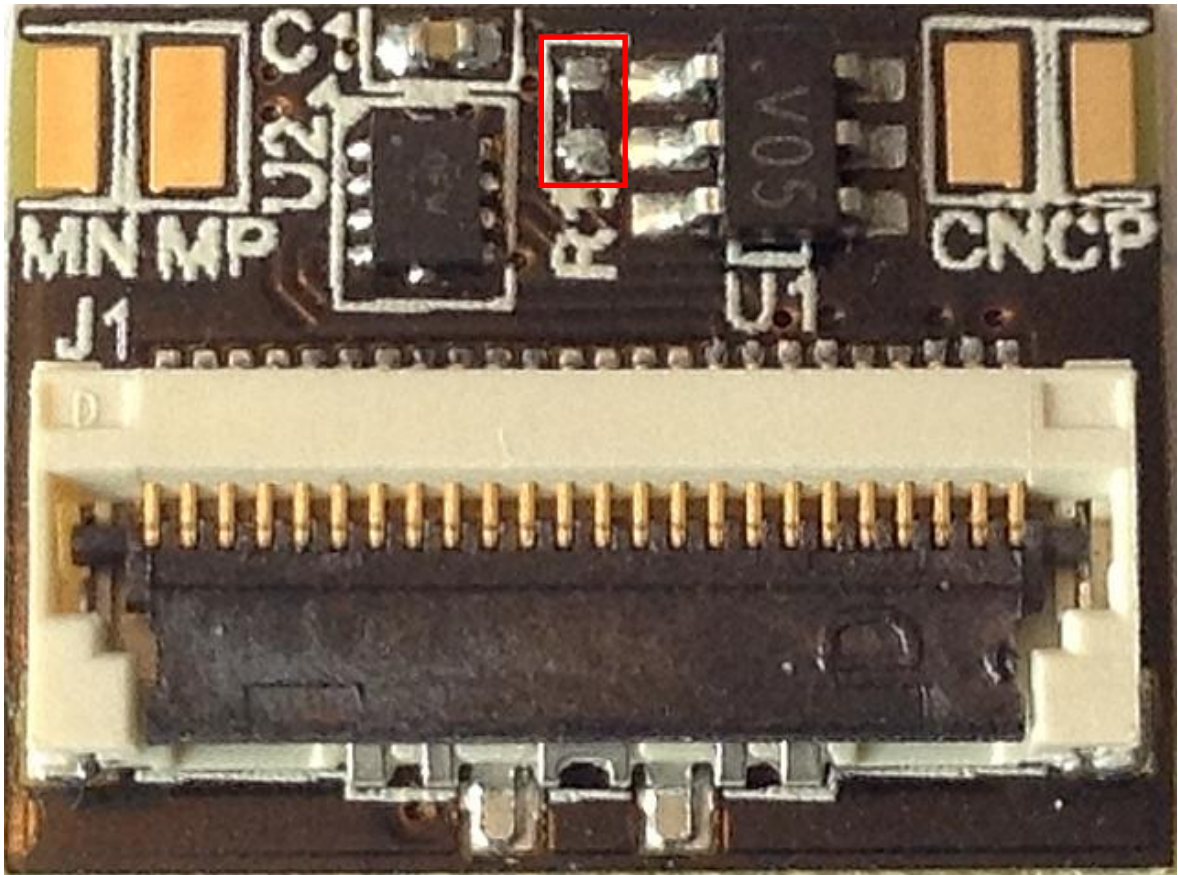


***External front view of PS3 ports***

3) Solder wires from the pins indicated below to the indicated pad on the USB QSB adapter.

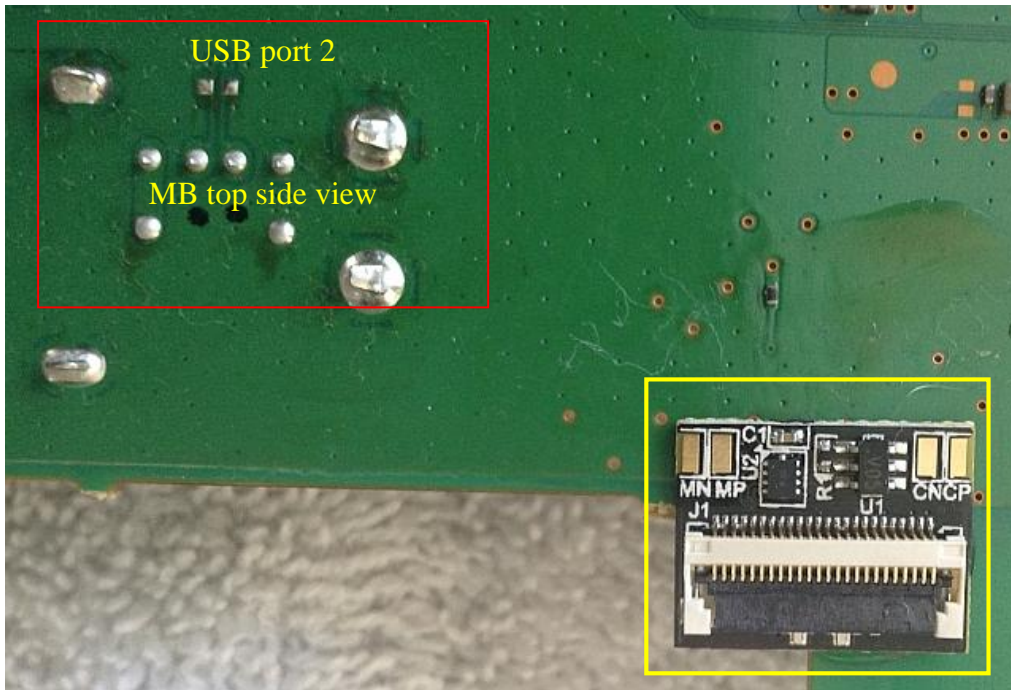


Note: If you wish to use USB QSB with 4.30A version Cobra ODE, please remove the R1 resistor.

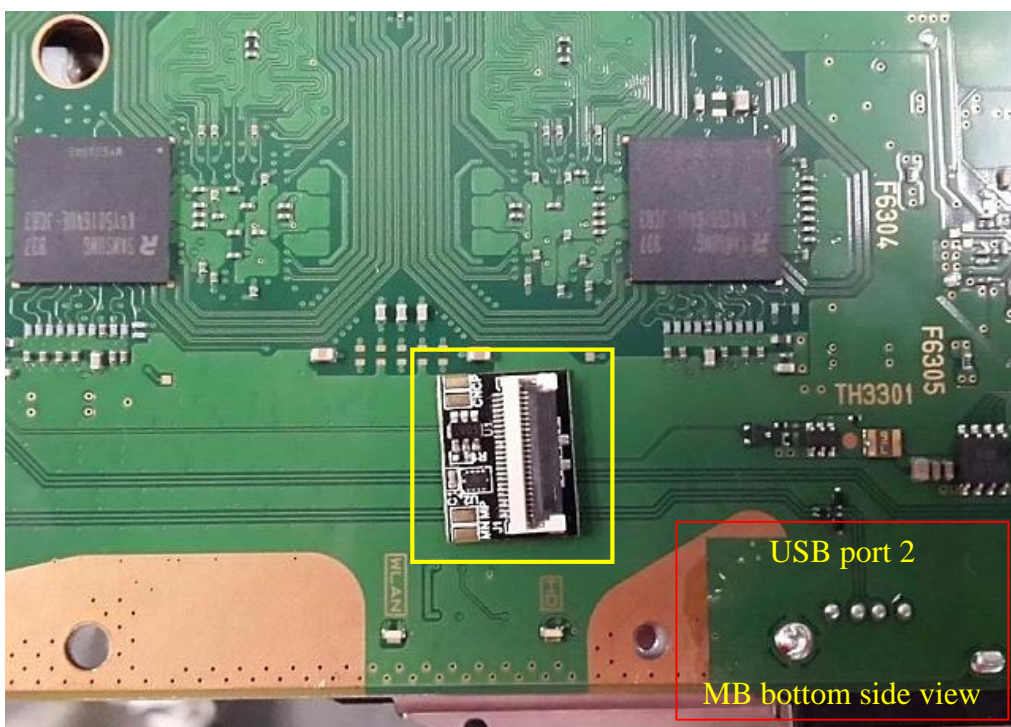


4) Affix your **USB QSB PCB** with LED facing downwards in the position(s) shown using double sided padded tape.

Phat:

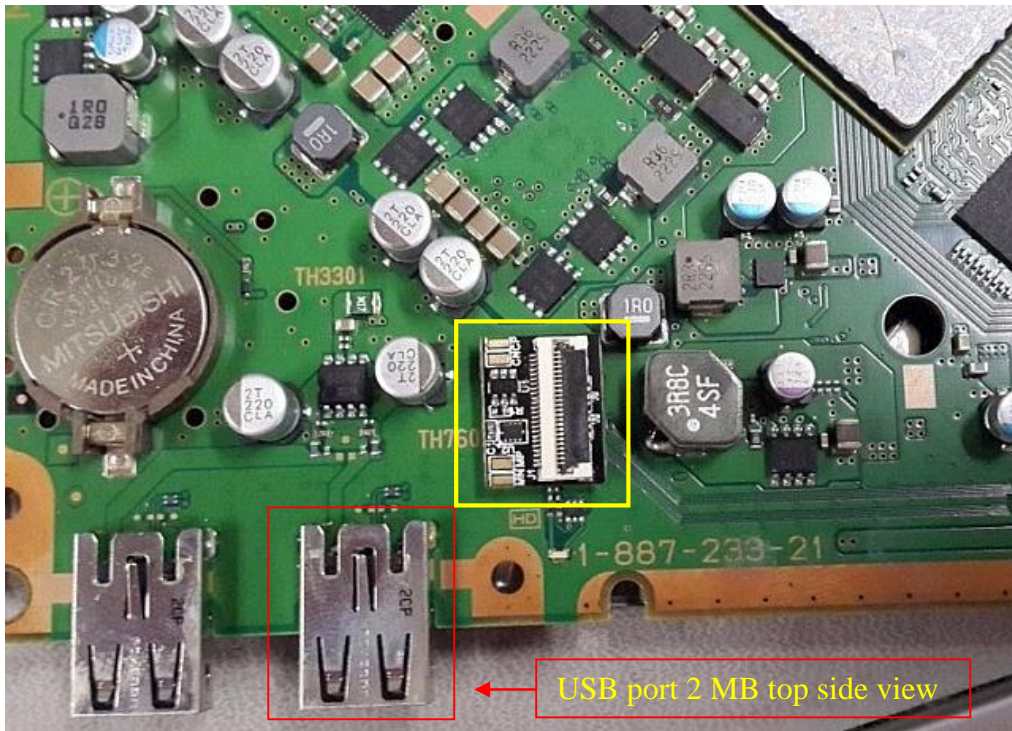


Slim [2k/2k5/3k]:



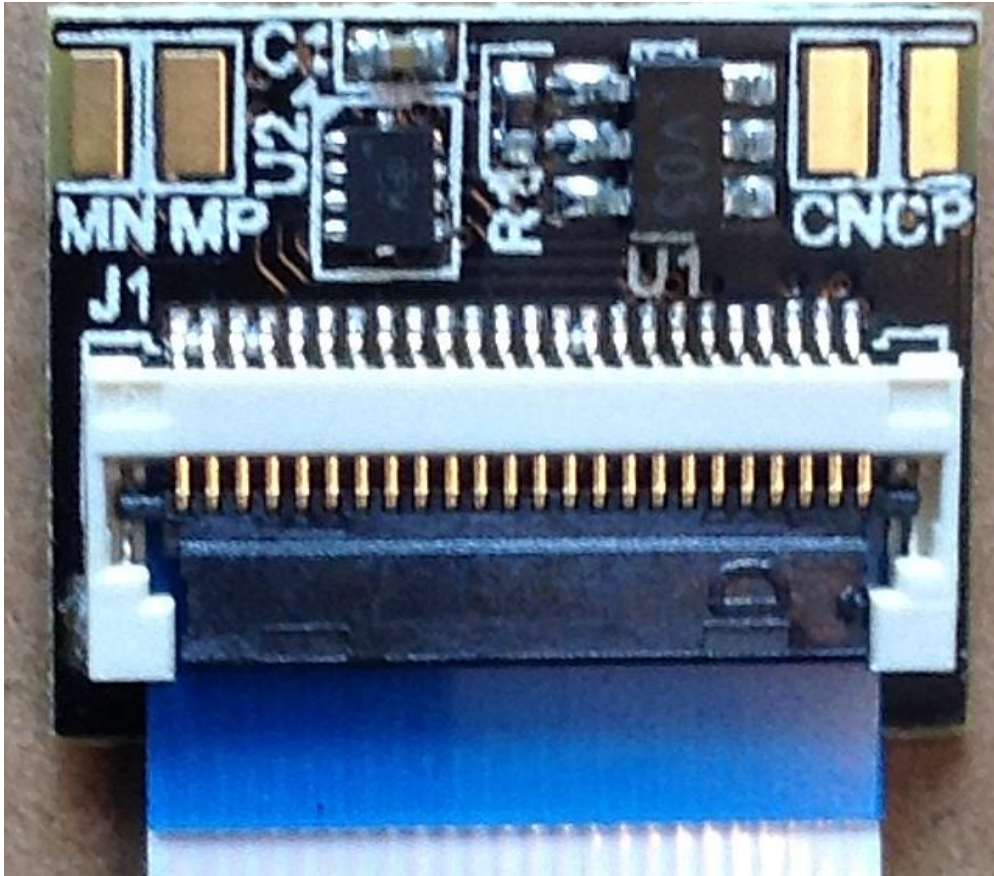


Super Slim [4k]:

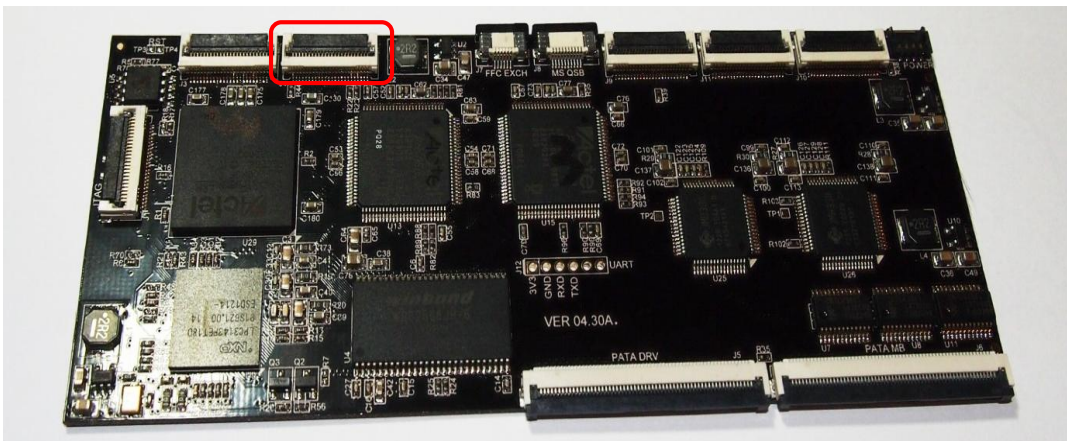


5) Connect the USB QSB to the Cobra ODE using a 24 pin FFC LVDS same side connection cable.

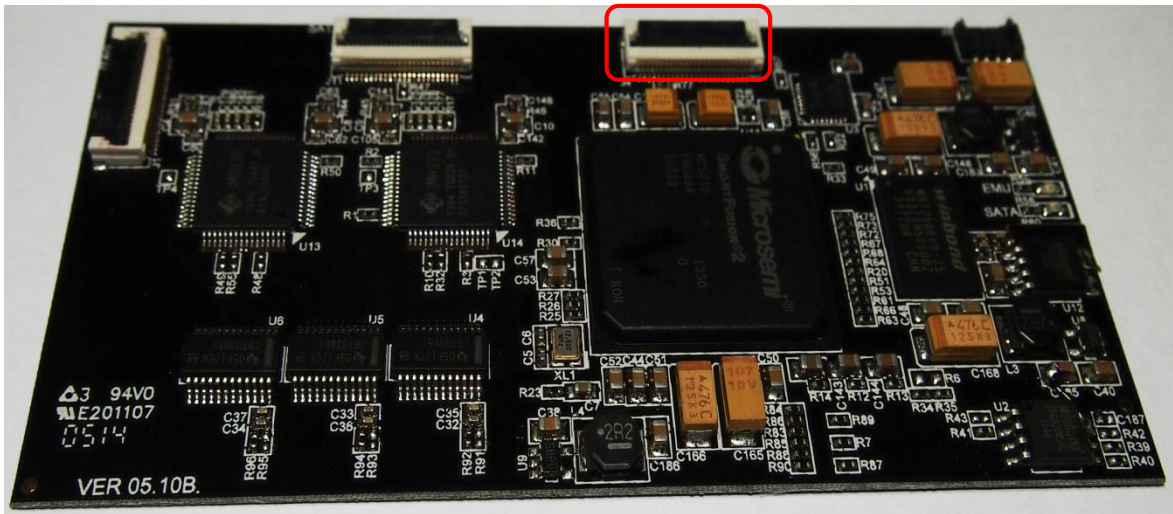
USB QSB:



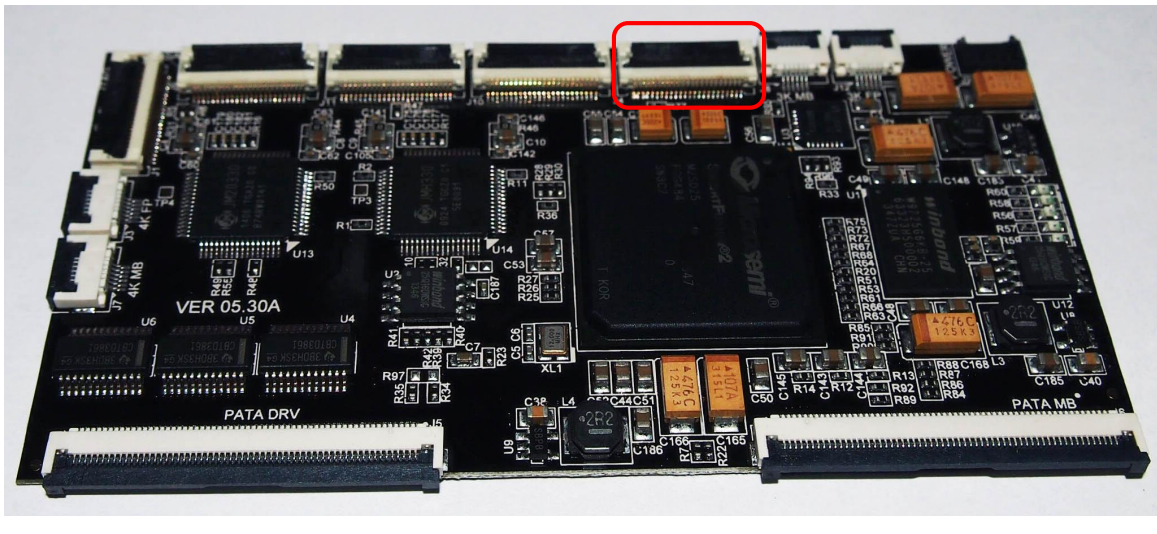
**v4.30A**



V5.10b



v5.30A



6) Test that the USB QSB is functioning correctly by connecting a USB storage device to the second port of your PS3. The USB QSB should be connected to the Cobra ODE using a same side 24 pin FFC LVDS cable. If the LED is green on boot of console with Cobra ODE installed and the Cobra ODE manager icon is displayed correctly in the XMB, then the installation has been successful. if not, check your connections using a multi meter for shorts or open connections.

7) If installation successful, please reassemble your console.

**Cable requirements from Cobra ODE to USB QSB:**

<b>Console version</b>	<b>COBRA ODE (UIF) TO USB QSB ADAPTER</b>
<b>PHAT 2K/2K1 2K5/3K 4K</b>	<b>SAME SIDE 24 PIN FFC LVDS CABLE</b>